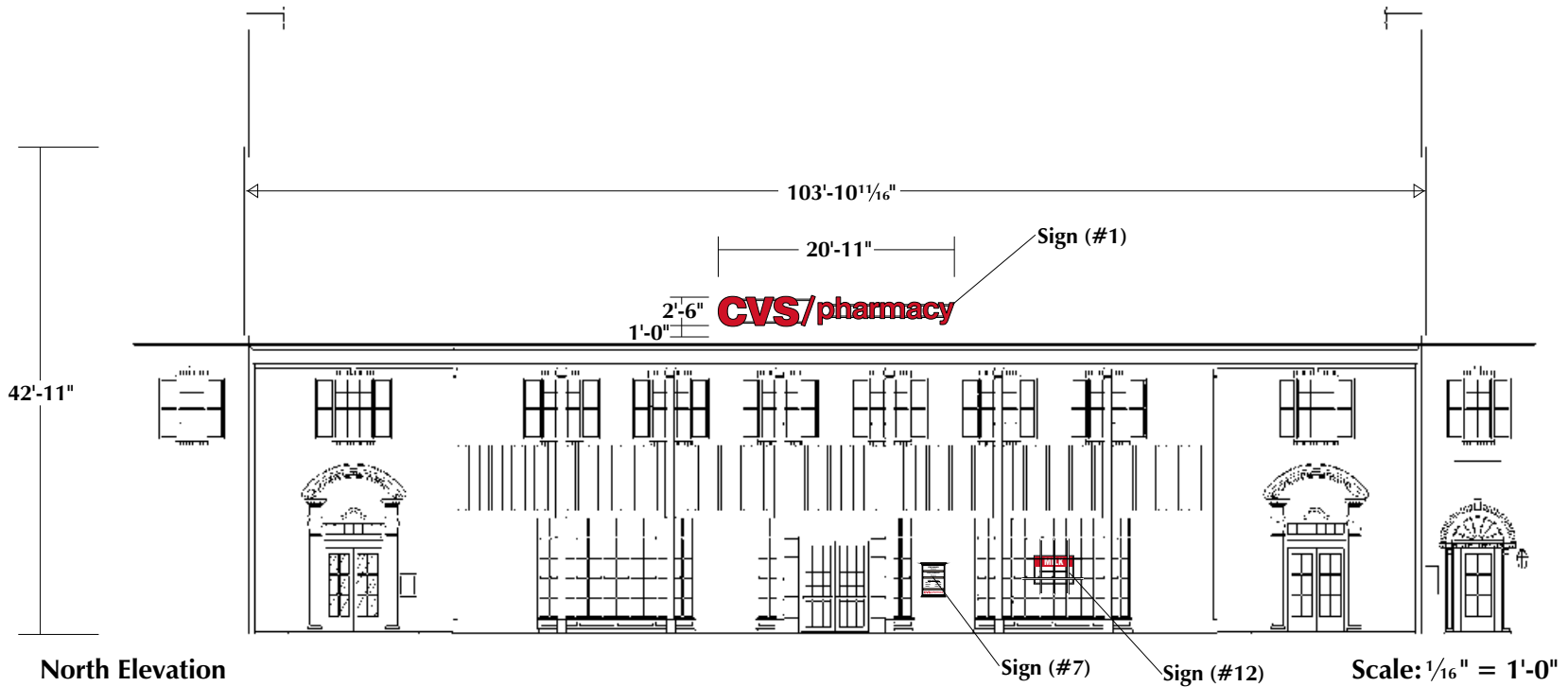


# CVS/pharmacy

---

**Store #04350**  
**13215 Shaker Square**  
**Cleveland, OH**



CVS pharmacy #04350 — 13215 Shaker Square, Cleveland, OH

Lead #MS-6009363

This is an original unpublished drawing, submitted for your use in connection with a project being planned for you by SignArt. It is not to be reproduced, copied or exhibited in any fashion without written permission of SignArt.

©2004

cvs04350

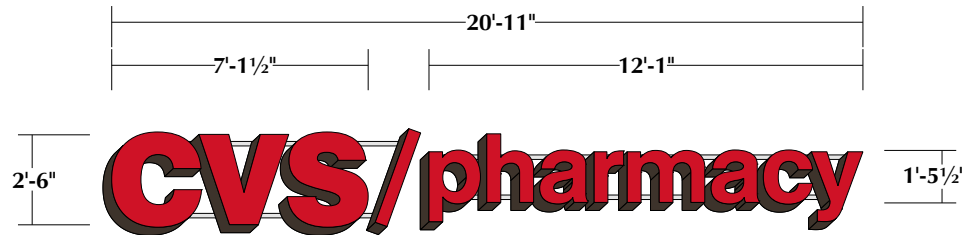
MB 3-8-06 7-26-06DP  
 3-9-06RN  
 6-20-06JH  
 7-14-06DP

8-2-06DP

Approved for: \_\_\_\_\_

By: \_\_\_\_\_

Date: \_\_\_\_\_



**Identification Sign (#1)**

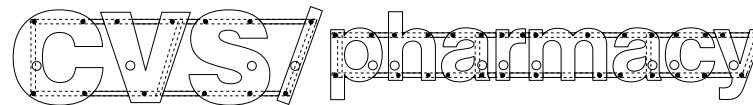
**Illuminated Channel Letters**

**Scale: 3/16" = 1'-0"**

- .177 Thick flat SG-278-0 red Acrylite faces.
- 15mm Clear red neon tubing. ('CVS' - two strokes, 'pharmacy' - one stroke)
- Dark bronze pre-painted .050 letter sides, 8 1/2" deep.
- 1" Dark bronze trim cap.
- 30ma, 120 volt built-in housing style transformers.
- U.L. Listed construction and labeled.
- Letters to be mounted on mansard mounting bracket system constructed of 1 1/2" x 1 1/2" x 3/16" angle painted GripGard semi-gloss to match grey roof (verify color).

**Square Footage**  
2'-6" x 20'-11" = 52.29 Sq. Ft.

Note: Sign#1 to be mounted to building roof using a mansard bracket mounting system (see detail).



**Position of Mounting Holes/Electrical Holes**

**Scale: 3/16" = 1'-0"**

• = Mounting Holes    ○ = Electrical Holes

Note: Channel letters mounted on mansard mounting bracket system.

CVS pharmacy #04350 — 13215 Shaker Square, Cleveland, OH

Lead #MS-6009363

This is an original unpublished drawing, submitted for your use in connection with a project being planned for you by SignArt. It is not to be reproduced, copied or exhibited in any fashion without written permission of SignArt.

©2004      cvs04350

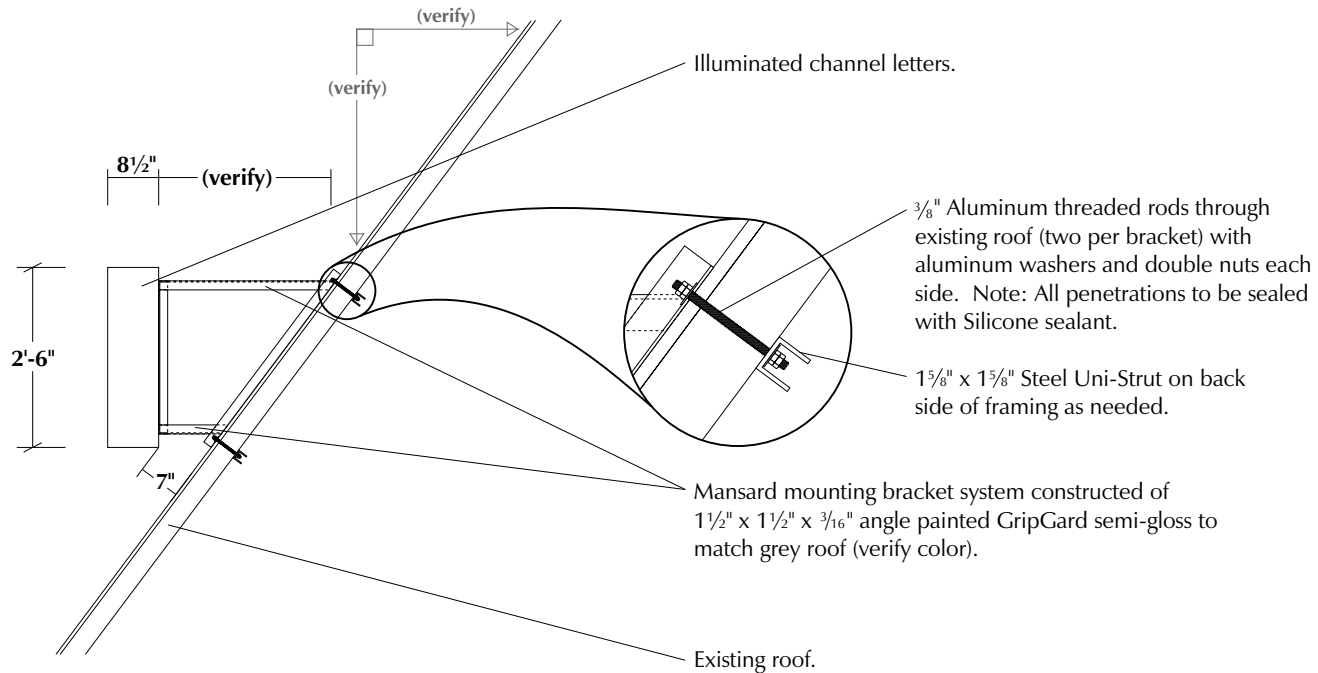
MB      3-8-06  
3-9-06RN  
6-20-06JH  
7-14-06DP

8-2-06DP

Approved for: \_\_\_\_\_

By: \_\_\_\_\_

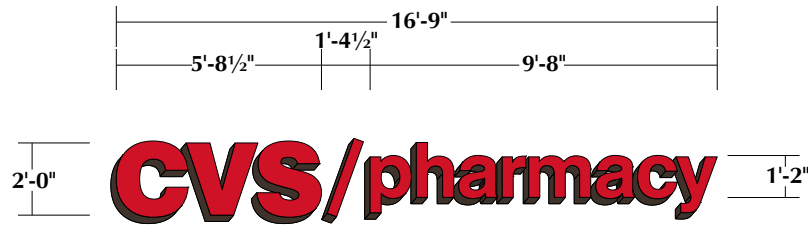
Date: \_\_\_\_\_



**Mansard Mounting System Detail**

**Scale: 3/8" = 1'-0"**

Note: Customer to provide access behind roof for mounting bracket installation.



**Identification Sign (#2) Illuminated Channel Letters**

Scale: 3/16" = 1'-0"

- .177 Flat SG-278-0 red Acrylite faces.
- 15mm Clear red neon tubing. ('CVS' - two strokes, 'pharmacy' - one stroke)
- Dark bronze pre-painted .050 letter sides, 8 1/2" deep.
- 1" Dark bronze trim cap.
- 30ma, 120 volt built-in transformers.
- U.L. Listed construction and labeled.

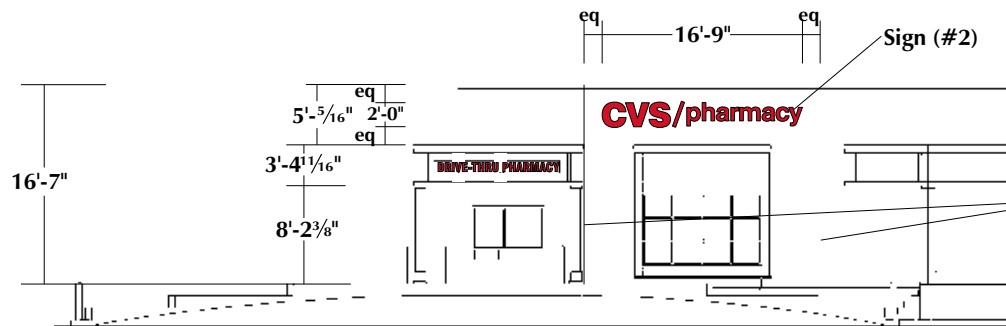
**Square Footage**  
2'-0" x 16'-9" = 33.50 Sq. Ft.



**Position of Mounting Holes/Electrical Holes**

Scale: 3/16" = 1'-0"

• = Mounting Holes    ○ = Electrical Holes



Note: Channel letters to be mounted centered left-to-right between obtuse building corners.

**West Elevation**

Scale: 1/16" = 1'-0"

CVS pharmacy #04350 — 13215 Shaker Square, Cleveland, OH

Lead #MS-6009363

This is an original unpublished drawing, submitted for your use in connection with a project being planned for you by SignArt. It is not to be reproduced, copied or exhibited in any fashion without written permission of SignArt.

©2004      cvs04350

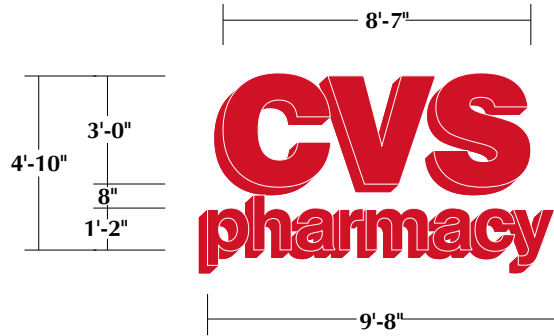
MB 3-8-06  
3-9-06RN  
6-20-06JH  
7-14-06DP

8-2-06DP

Approved for: \_\_\_\_\_

By: \_\_\_\_\_

Date: \_\_\_\_\_



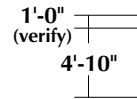
**Identification Sign (#3)**

**Custom Reverse Non-Illuminated Channel Letters**

4" Deep reverse channel letters with .100 aluminum faces and welded .080 aluminum returns painted CVS red semi-gloss. Mount letters flush to fascia using stud mounting system.

Scale: 3/16" = 1'-0"

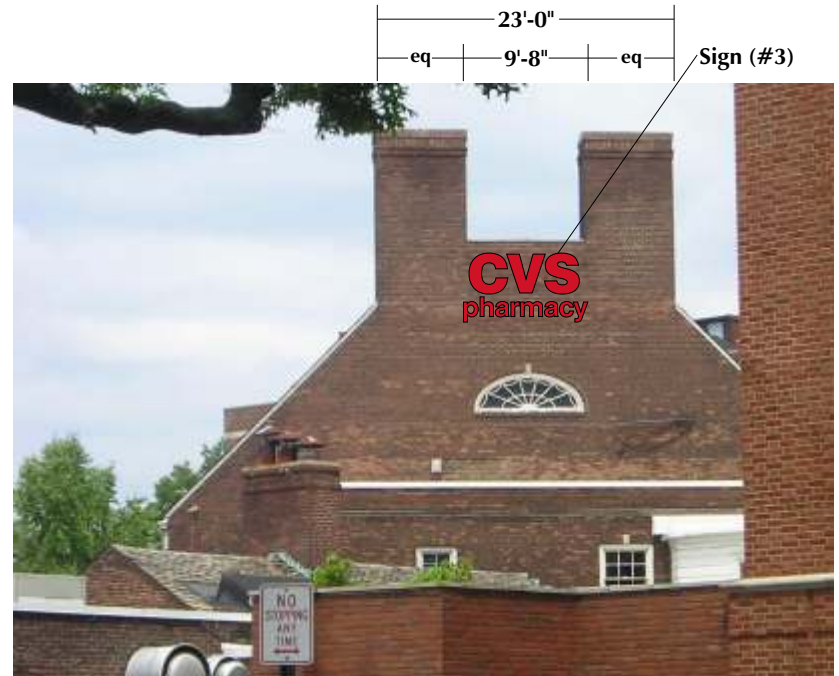
**Square Footage**  
5'-10" x 9'-8" = 46.72 Sq. Ft.



**Position of Mounting Holes**

Scale: 3/16" = 1'-0"

• = Mounting Holes



**Partial Elevation Showing Sign #3**

Scale: NTS

SignArt is not responsible for any misrepresented information contained within this photo due to unknown building orientation and dimensions.

Lead #MS-6009363

CVS pharmacy #04350 — 13215 Shaker Square, Cleveland, OH

This is an original unpublished drawing, submitted for your use in connection with a project being planned for you by SignArt. It is not to be reproduced, copied or exhibited in any fashion without written permission of SignArt.

©2004

cv04350

MB

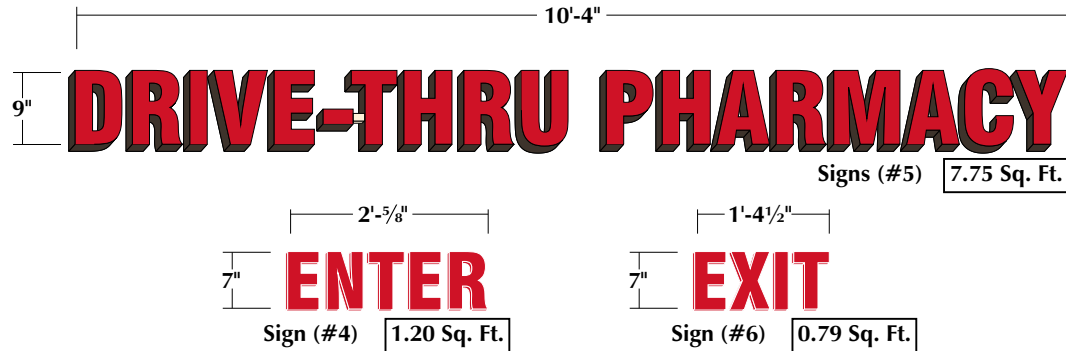
3-8-06  
3-9-06RN  
6-20-06JH  
7-14-06DP

8-2-06DP

Approved for: \_\_\_\_\_

By: \_\_\_\_\_

Date: \_\_\_\_\_



**Traffic Control (Signs #4, #5 & #6)**

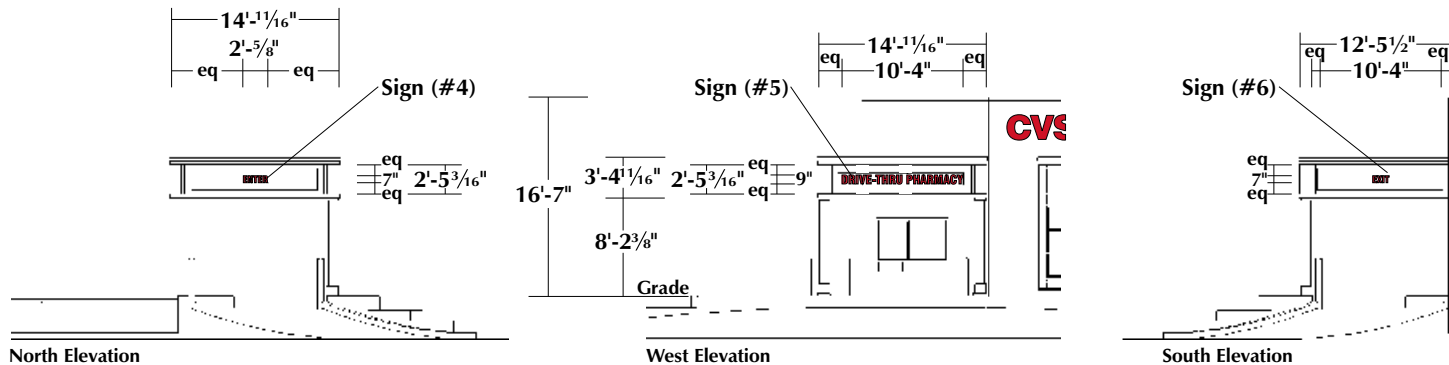
**Drive Thru Directional Wall Letters**

Scale: 1/2" = 1'-0"

**Illuminated Letters (Sign #5)** — 4" Deep channel letters to have aluminum returns and backs to be pre-painted dark bronze, faces to be .177 Thick flat SG-278-0 red Acrylite with 3/4" dark bronze Jewelite. Letters to be illuminated using 12mm single stroke clear red neon tubing powered by remote 30ma transformer in separate metal boxes mounted behind facade.

Note: Hyphen on 'Drive - Thru Pharmacy' letters to be bridged. Bridge to be painted to match building facade.

**Non-Illuminated Letters (Signs #4 & #6)** — .177 Thick flat SG-278-0 red Acrylite flat cut letters to be stud mounted 1/2" from facade using aluminum studs and spacers.



Partial Elevations Showing Drive-Thru

Scale: 1/16" = 1'-0"

CVS pharmacy #04350 — 13215 Shaker Square, Cleveland, OH

Lead #MS-6009363

This is an original unpublished drawing, submitted for your use in connection with a project being planned for you by SignArt. It is not to be reproduced, copied or exhibited in any fashion without written permission of SignArt.

©2004 cvs04350

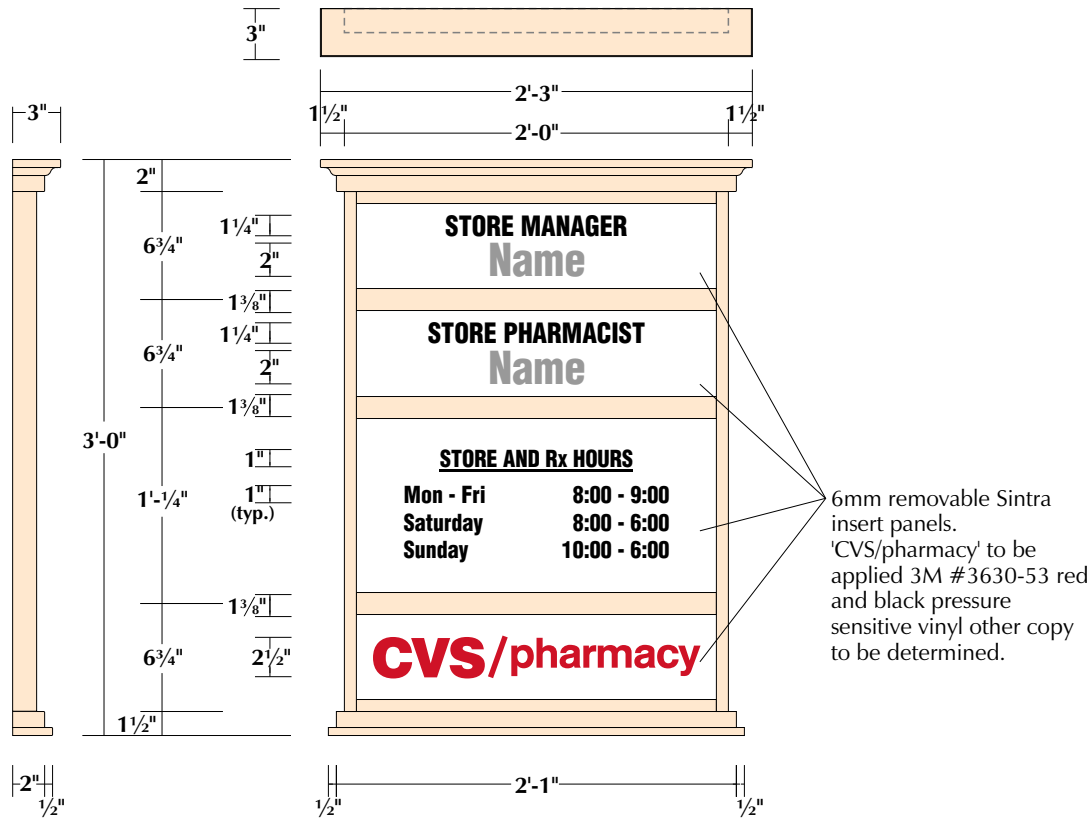
MB 3-8-06 7-26-06DP  
3-9-06RN  
6-20-06JH  
7-14-06DP

8-2-06DP

Approved for: \_\_\_\_\_

By: \_\_\_\_\_

Date: \_\_\_\_\_



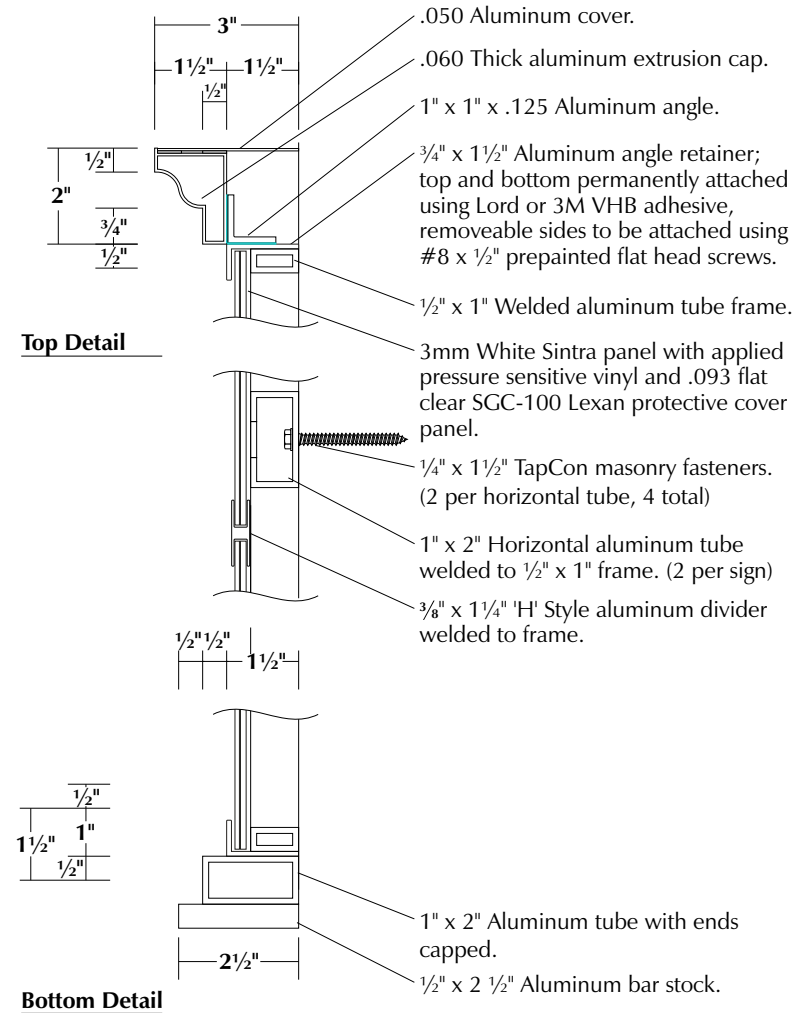
Directional Sign (#7)

3'-0" x 2'-0" = 6.00 Sq. Ft.

**Custom Non-Illuminated Information Panel**

Scale: 1" = 1'-0"

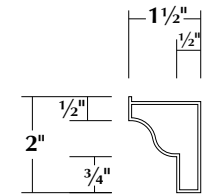
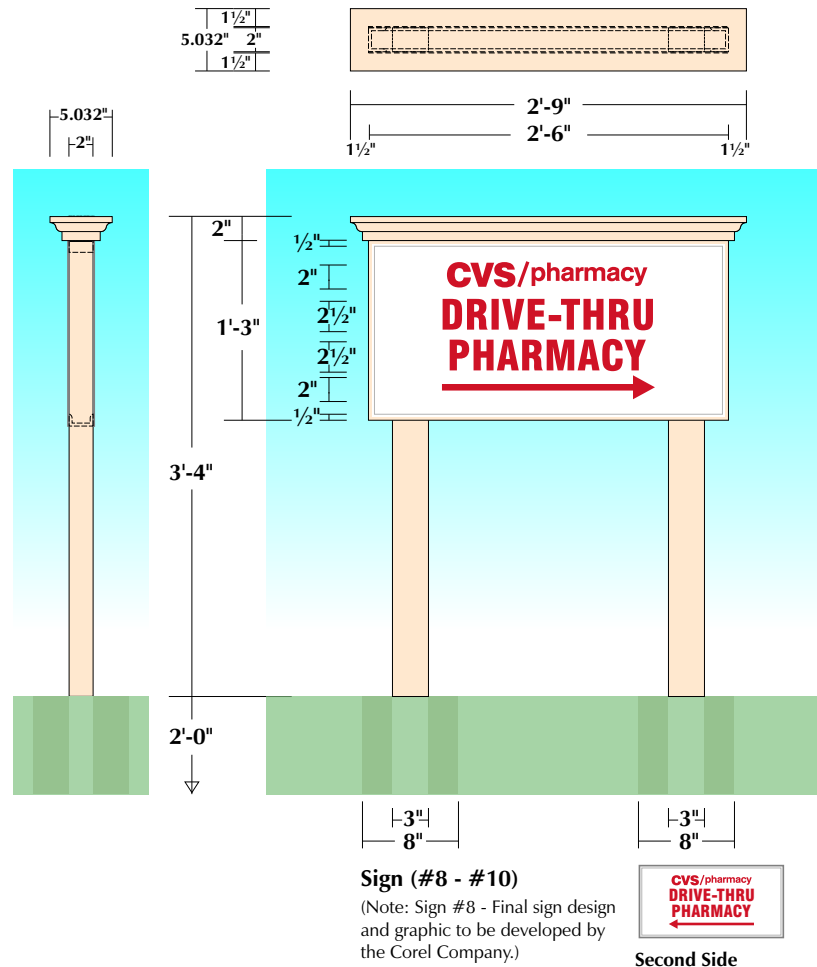
1 1/2" x 2" x .125" Aluminum top and 1 1/2" x 2 1/2" bottom molding to be painted GripGard semi-gloss to match STO#NA05-0001 raftertail (verify color at site). Retainers and divider bars to be painted GripGard semi-gloss to match STO#NA05-0001 raftertail (verify color at site).



**Details**

Scale: 3" = 1'





**Cap Detail**

Scale: 3" = 1"

.060 Thick aluminum

**Traffic Control Signs (#8 - #10)**

**Non-Illuminated Double Faced Directional Sign**

Scale: 3/4" = 1'-0"

- 1 1/2" x 2" x .125" Aluminum channel frame with 2" x 3" aluminum legs, painted GripGuard semi-gloss to match STO#NA05-0001 raftertail (verify color at site). Extruded .060 aluminum top molding to be painted GripGuard semi-gloss to match STO#NA05-0001 raftertail (verify color at site).
- 1'-3" x 2'-6" x .063 Aluminum face to be painted GripGuard semi-gloss to match STO#NA05-0001 raftertail (verify color at site) and VHB'd to aluminum channel frame with applied 3M white reflective Scotchlite pressure sensitive vinyl background and red reflective pressure sensitive vinyl graphics.
- 8" x 2'-0" Augered Sakrete filled footings.

1'-3" x 2'-6" = 3.12 Sq.Ft.

CVS pharmacy #04350 — 13215 Shaker Square, Cleveland, OH

Lead #MS-6009363

This is an original unpublished drawing, submitted for your use in connection with a project being planned for you by SignArt. It is not to be reproduced, copied or exhibited in any fashion without written permission of SignArt.

©2004

cvs04350

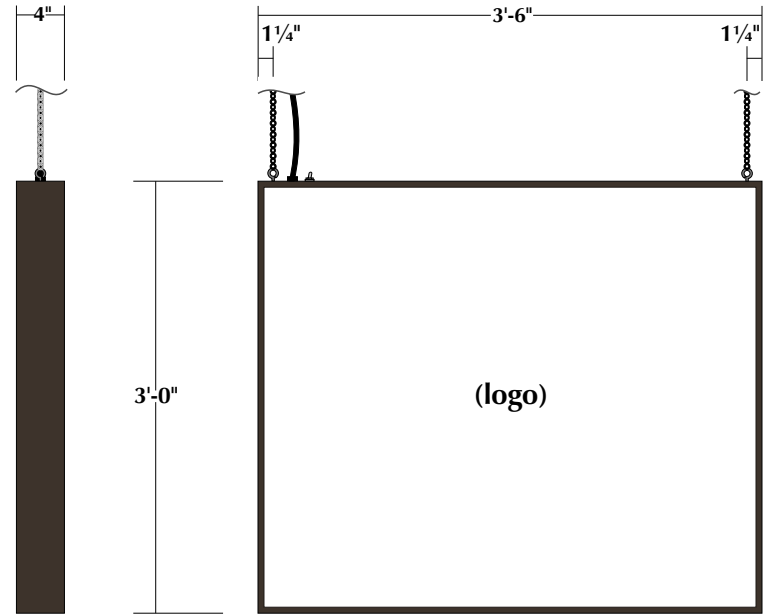
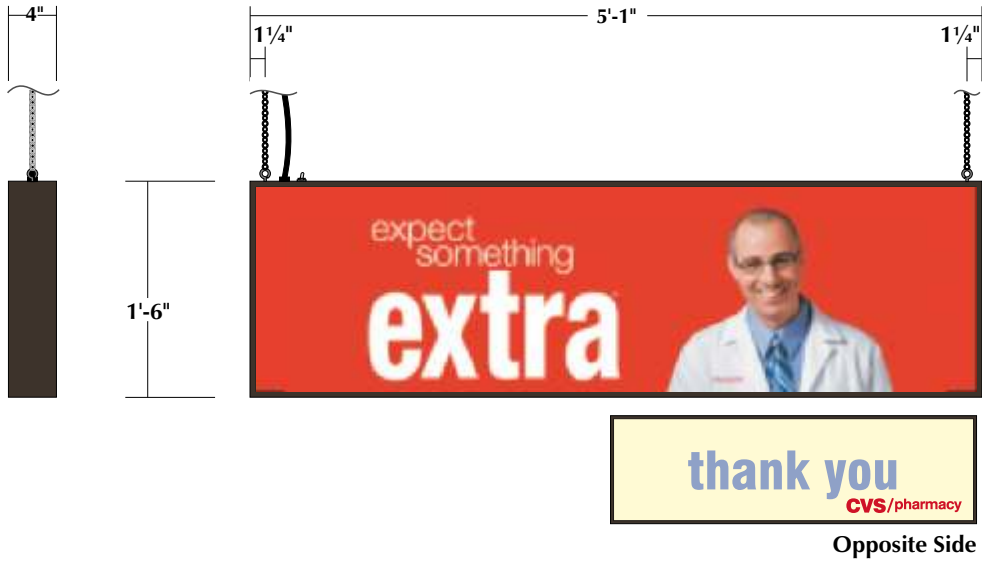
MB 3-8-06 7-26-06DP  
3-9-06RN  
6-20-06JH  
7-14-06DP

8-2-06DP

Approved for: \_\_\_\_\_

By: \_\_\_\_\_

Date: \_\_\_\_\_



**Traffic Control Sign (#11)**

**Illuminated Interior Sign**

**Scale : 3/4" = 1'-0"**

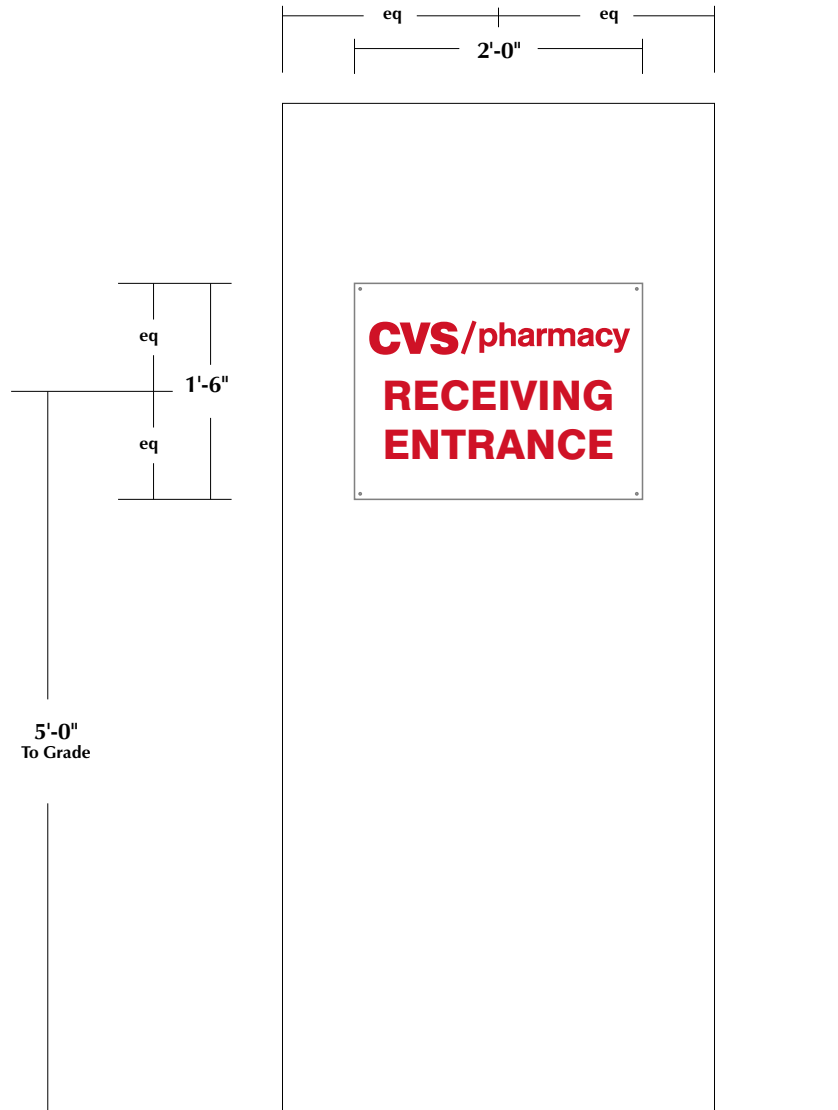
Note: Sign are to be provided by others.

**Traffic Control Sign (#12)**

**Illuminated Window Sign**

**Scale : 3/4" = 1'-0"**

Note: Sign to be provided by others.



**Traffic Control Sign (#13)**

**Non-Illuminated Receiving Door Sign**

Scale:  $\frac{3}{4}'' = 1'-0''$

- .080 White aluminum face with applied 3M #3630-53 red pressure sensitive vinyl copy.
- Four #8 x 1/2" white pan head sheet metal screws, one at each corner of sign.
- 3/16" Holes on receiving door.
- 5'-0" To center of sign from grade.

1'-6" x 2'-0" = 3.00 Sq.Ft.

CVS pharmacy #04350 — 13215 Shaker Square, Cleveland, OH

Lead #MS-6009363

This is an original unpublished drawing, submitted for your use in connection with a project being planned for you by SignArt. It is not to be reproduced, copied or exhibited in any fashion without written permission of SignArt.

©2004

cv504350

MB 3-8-06  
3-9-06RN  
6-20-06JH  
7-14-06DP

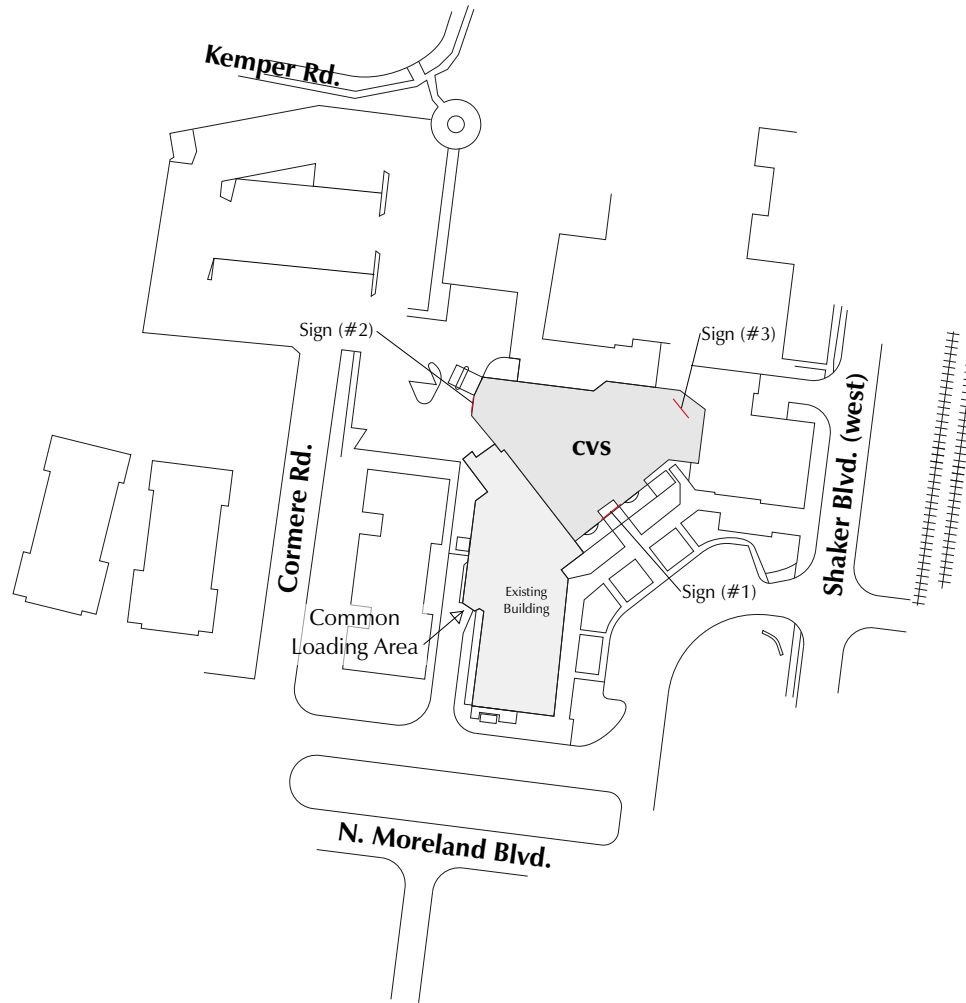
7-26-06DP

8-2-06DP

Approved for: \_\_\_\_\_

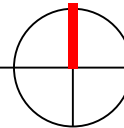
By: \_\_\_\_\_

Date: \_\_\_\_\_



Site Plan

Scale: None



CVS pharmacy #04350 — 13215 Shaker Square, Cleveland, OH

Lead #MS-6009363

This is an original unpublished drawing, submitted for your use in connection with a project being planned for you by SignArt. It is not to be reproduced, copied or exhibited in any fashion without written permission of SignArt.

©2004

cvs04350

MB 3-8-06  
3-9-06RN  
6-20-06JH  
7-14-06DP

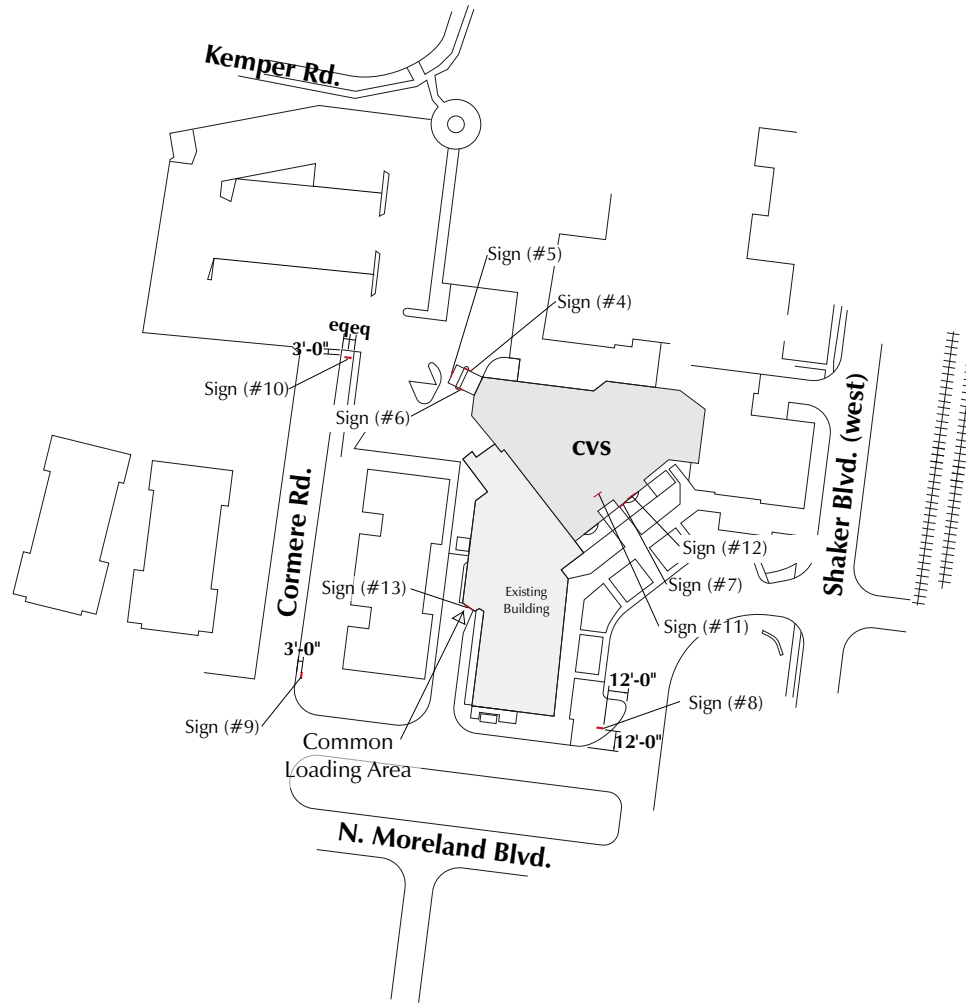
7-26-06DP

8-2-06DP

Approved for: \_\_\_\_\_

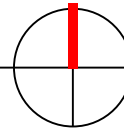
By: \_\_\_\_\_

Date: \_\_\_\_\_



Site Plan

Scale: None



CVS pharmacy #04350 — 13215 Shaker Square, Cleveland, OH

Lead #MS-6009363

This is an original unpublished drawing, submitted for your use in connection with a project being planned for you by SignArt. It is not to be reproduced, copied or exhibited in any fashion without written permission of SignArt.

©2004

cvs04350

MB 3-8-06  
3-9-06RN  
6-20-06JH  
7-14-06DP

7-26-06DP

8-2-06DP

Approved for: \_\_\_\_\_

By: \_\_\_\_\_

Date: \_\_\_\_\_