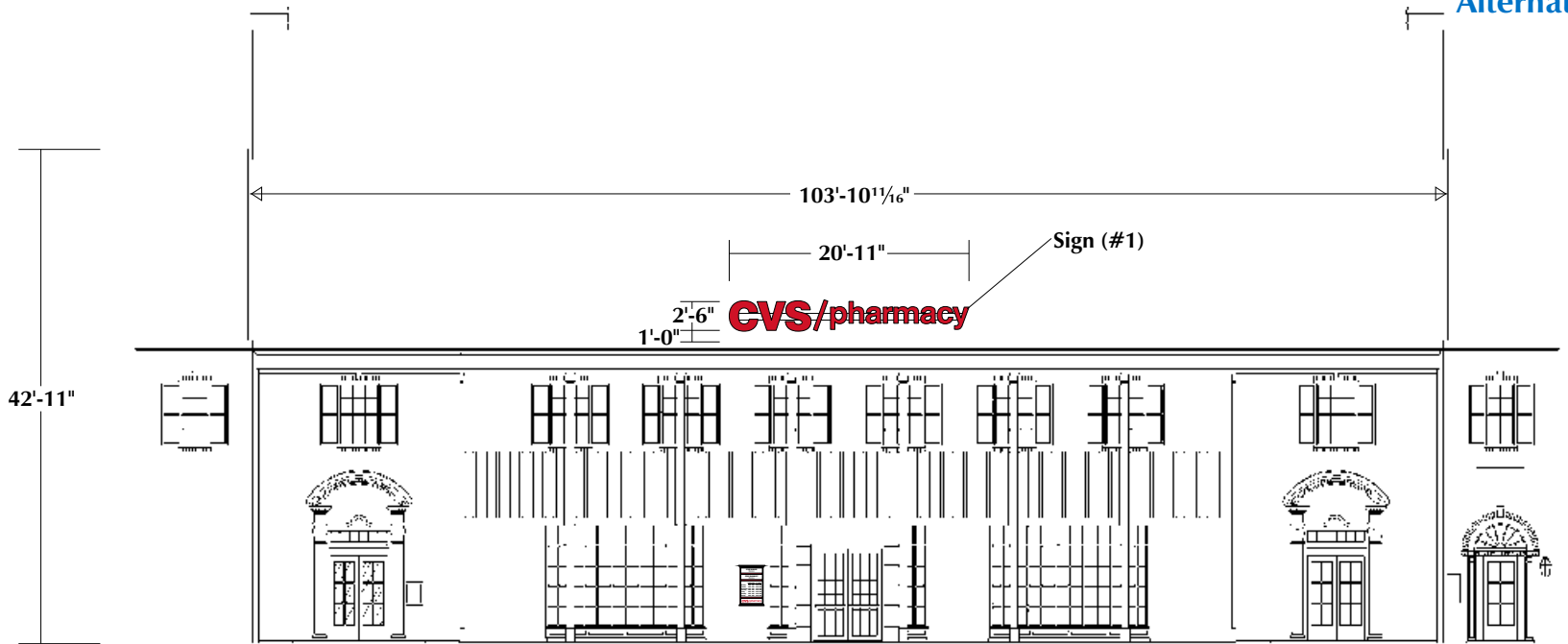


CVS/pharmacy

Store #04350

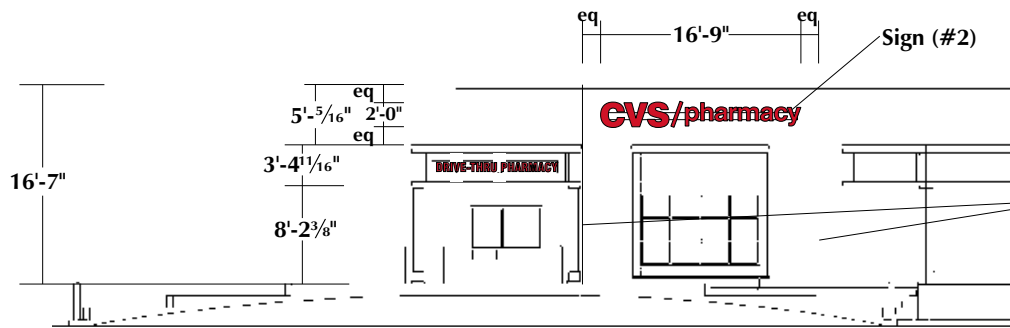
**13215 Shaker Square
Cleveland, OH**

Alternative #1



North Elevation

Scale: 1/16" = 1'-0"



West Elevation

Scale: 1/16" = 1'-0"

CVS pharmacy #04350 — 13215 Shaker Square, Cleveland, OH

Lead #MS-6009363

This is an original unpublished drawing, submitted for your use in connection with a project being planned for you by SignArt. It is not to be reproduced, copied or exhibited in any fashion without written permission of SignArt.

©2004

cv504350

MB 3-8-06
3-9-06RN
6-20-06JH

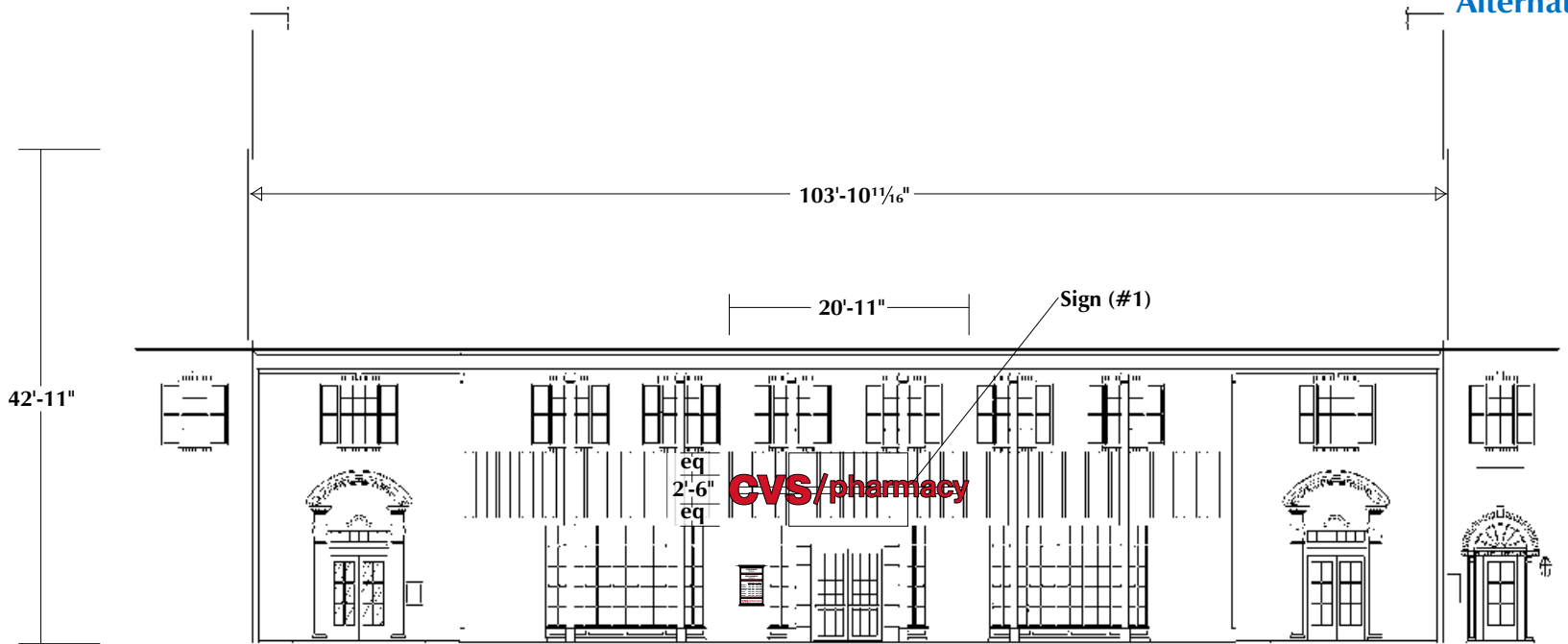
7-14-06DP

Approved for: _____

By: _____

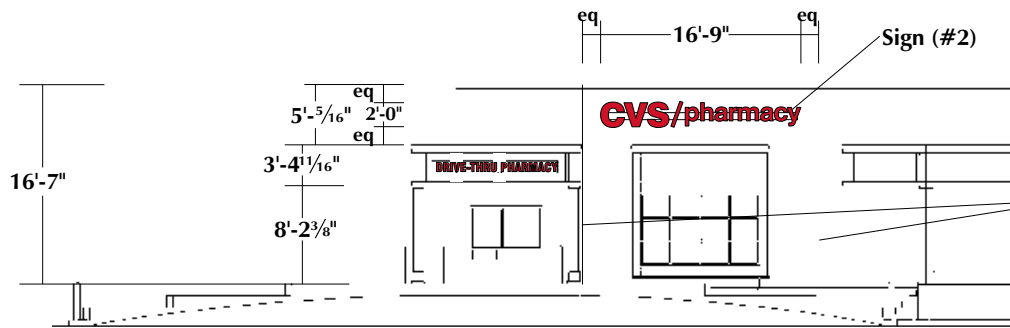
Date: _____

Alternative #2



North Elevation

Scale: 1/16" = 1'-0"



West Elevation

Scale: 1/16" = 1'-0"

Note: Channel letters to be mounted centered left-to-right between obtuse building corners.

CVS pharmacy #04350 — 13215 Shaker Square, Cleveland, OH

Lead #MS-6009363

This is an original unpublished drawing, submitted for your use in connection with a project being planned for you by SignArt. It is not to be reproduced, copied or exhibited in any fashion without written permission of SignArt.

©2004

cvs04350

MB 3-8-06
3-9-06RN
6-20-06JH

7-14-06DP

Approved for: _____

By: _____

Date: _____



North Elevation — Showing Placement Sign (#1) - Alternative #1 Scale: 1/16" = 1'-0"



North Elevation — Showing Placement Sign (#1) - Alternative #2 Scale: 1/16" = 1'-0"

Note: Sign to be mounted to pillars and visually centered between floors.



CVS pharmacy #04350 — 13215 Shaker Square, Cleveland, OH

Lead #MS-6009363

This is an original unpublished drawing, submitted for your use in connection with a project being planned for you by SignArt. It is not to be reproduced, copied or exhibited in any fashion without written permission of SignArt.

©2004 cvs04350

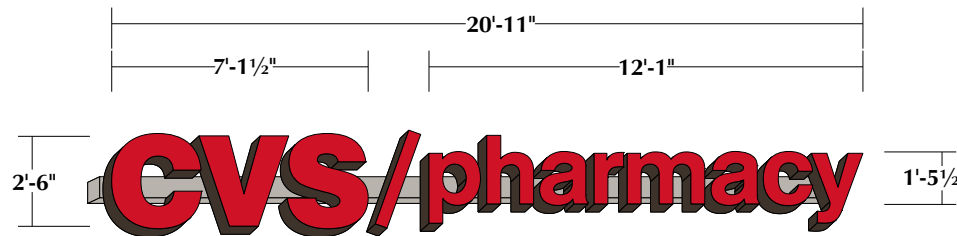
MB 3-8-06
3-9-06RN
6-20-06JH

7-14-06DP

Approved for: _____

By: _____

Date: _____



Identification Sign (#1)

Illuminated Channel Letters

Scale: 3/16" = 1'-0"

- .177 Thick flat SG-278-0 red Acrylite faces.
- Two strokes 15mm clear red neon tubing.
- Dark bronze pre-painted .050 letter sides, 8½" deep.
- 1" Dark bronze trim cap.
- 30ma, 120 volt built-in housing style transformers.
- U.L. Listed construction and labeled.
- Letters to be mounted on standard 7" x 7" aluminum raceway painted GripGard semi-gloss to match grey roof (verify color).

Note: Sign#1 to be mounted to building roof using a mansard bracket mounting system (see detail).

Square Footage
 2'-6" x 20'-11" = 52.29 Sq. Ft.

CVS pharmacy #04350 — 13215 Shaker Square, Cleveland, OH

Lead #MS-6009363

This is an original unpublished drawing, submitted for your use in connection with a project being planned for you by SignArt. It is not to be reproduced, copied or exhibited in any fashion without written permission of SignArt.

©2004 cvs04350

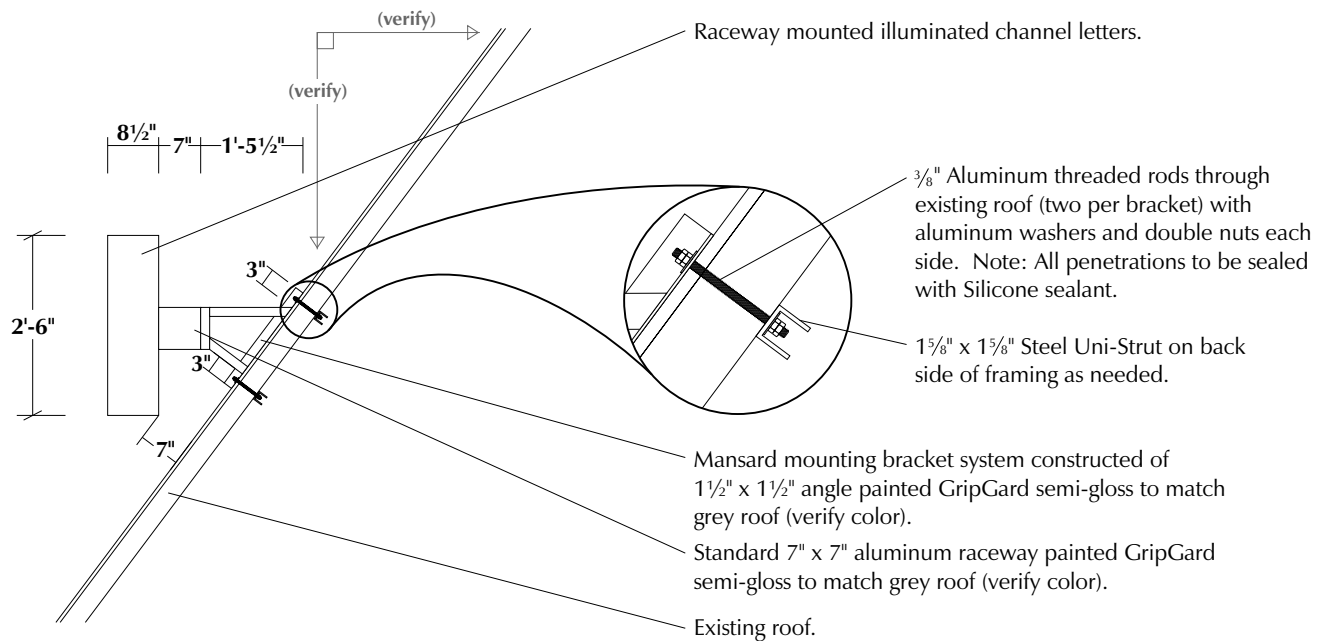
MB 3-8-06
 3-9-06RN
 6-20-06JH

7-14-06DP

Approved for: _____

By: _____

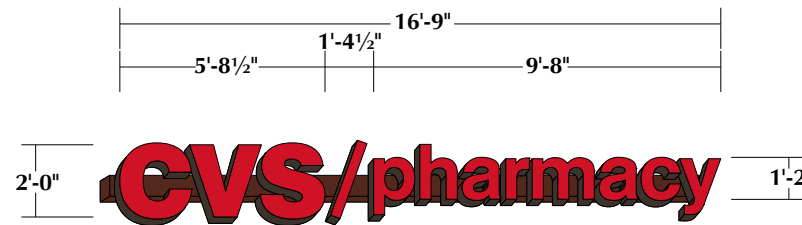
Date: _____



Mansard Mounting System Detail

Scale: 3/8" = 1'-0"

Note: Customer to provide access behind roof for mounting bracket installation.



Identification Sign (#2)

24" Illuminated Channel Letters

Scale: 3/16" = 1'-0"

- .177 Flat SG-278-0 red Acrylite faces.
- 15mm Clear red neon tubing. ('CVS' - two strokes, 'pharmacy' - one stroke)
- Dark bronze pre-painted .050 letter sides, 8 1/2" deep.
- 1" Dark bronze trim cap.
- 30ma, 120 volt raceway mounted transformers.
- U.L. Listed construction and labeled.
- Letters to be mounted on standard 7" x 7" aluminum raceway painted GripGard semi-gloss to match brick facade

Square Footage
 2'-0" x 16'-9" = **33.50 Sq. Ft.**

CVS pharmacy #04350 — 13215 Shaker Square, Cleveland, OH

Lead #MS-6009363

This is an original unpublished drawing, submitted for your use in connection with a project being planned for you by SignArt. It is not to be reproduced, copied or exhibited in any fashion without written permission of SignArt.

©2004 cvs04350

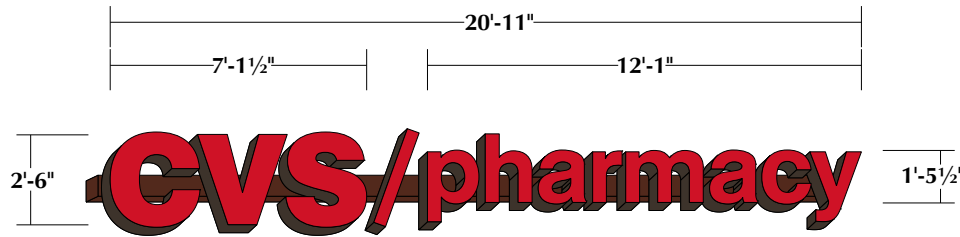
MB 3-8-06
 3-9-06RN
 6-20-06JH

7-14-06DP

Approved for: _____

By: _____

Date: _____

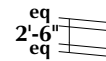


Identification Sign (#3) Illuminated Channel Letters

Scale: 3/16" = 1'-0"

- .177 Thick flat SG-278-0 red Acrylite faces.
- Two strokes 15mm clear red neon tubing.
- Dark bronze pre-painted .050 letter sides, 8 1/2" deep.
- 1" Dark bronze trim cap.
- 30ma, 120 volt built-in housing style transformers.
- U.L. Listed construction and labeled.
- Letters to be mounted on standard 7" x 7" aluminum raceway painted GripGard semi-gloss to match brick facade

Square Footage
2'-6" x 20'-11" = 52.29 Sq. Ft.



Partial Elevation Showing Sign #3

Scale: NTS

CVS pharmacy #04350 — 13215 Shaker Square, Cleveland, OH

Lead #MS-6009363

This is an original unpublished drawing, submitted for your use in connection with a project being planned for you by SignArt. It is not to be reproduced, copied or exhibited in any fashion without written permission of SignArt.

©2004 cvs04350

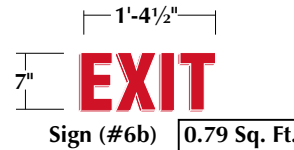
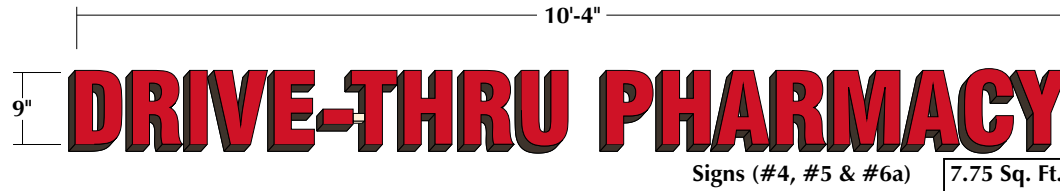
MB 3-8-06
3-9-06RN
6-20-06JH

7-14-06DP

Approved for: _____

By: _____

Date: _____



Traffic Control (Signs #4, #5 & #6)

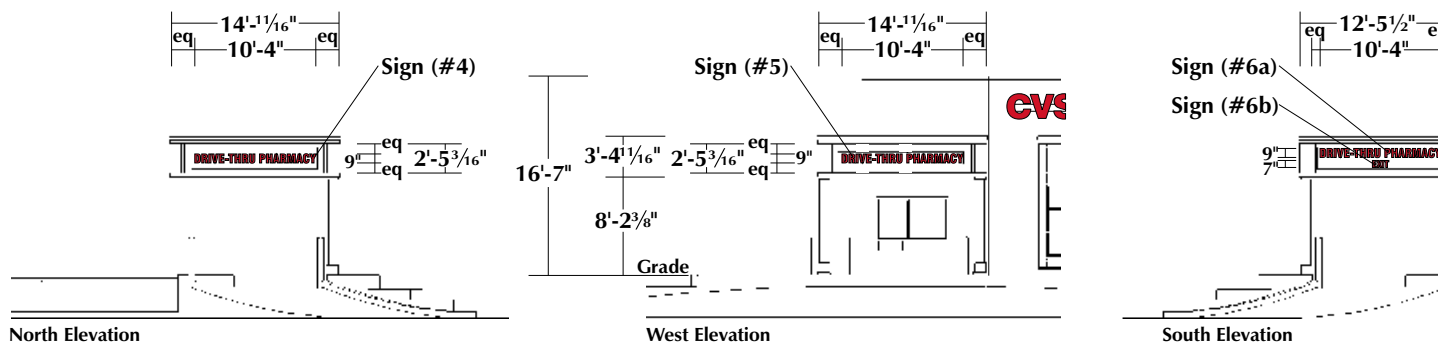
Drive Thru Directional Wall Letters

Scale: 1/2" = 1'-0"

Illuminated Letters (Signs #4, #5, & #6a) — 4" Deep channel letters to have aluminum returns and backs to be pre-painted dark bronze, faces to be .177 Thick flat SG-278-0 red Acrylite with 3/4" dark bronze Jewelite. Letters to be illuminated using 12mm single stroke clear red neon tubing powered by remote 30ma transformer in separate metal boxes mounted behind facade.

Note: Hyphen on 'Drive - Thru Pharmacy' letters to be bridged. Bridge to be painted to match building facade.

Non-Illuminated Letters (Signs #6b) — .177 Thick flat SG-278-0 red Acrylite flat cut letters to be stud mounted 1/2" from facade using aluminum studs and spacers.



Partial Elevations Showing Drive-Thru

Scale: 1/16" = 1'-0"

CVS pharmacy #04350 — 13215 Shaker Square, Cleveland, OH

Lead #MS-6009363

This is an original unpublished drawing, submitted for your use in connection with a project being planned for you by SignArt. It is not to be reproduced, copied or exhibited in any fashion without written permission of SignArt.

©2004

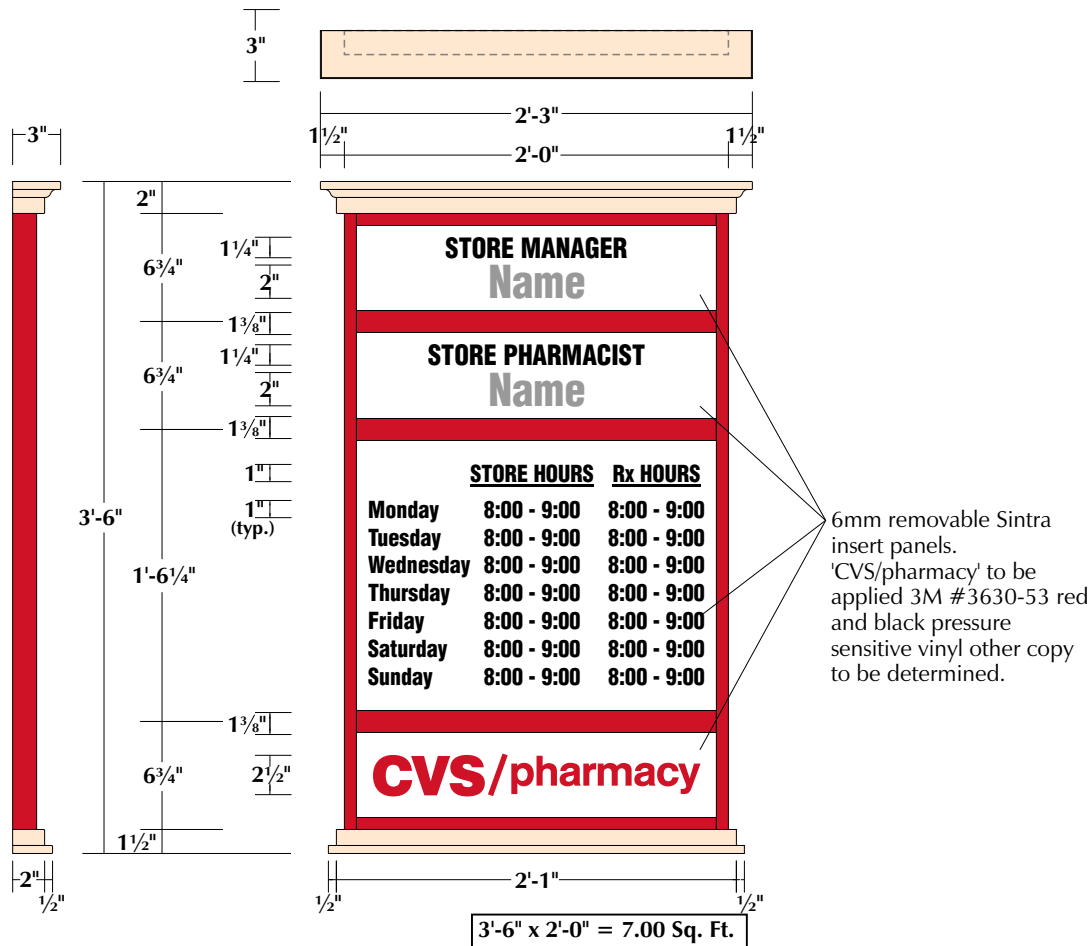
cvs04350

MB 7-14-06DP

Approved for: _____

By: _____

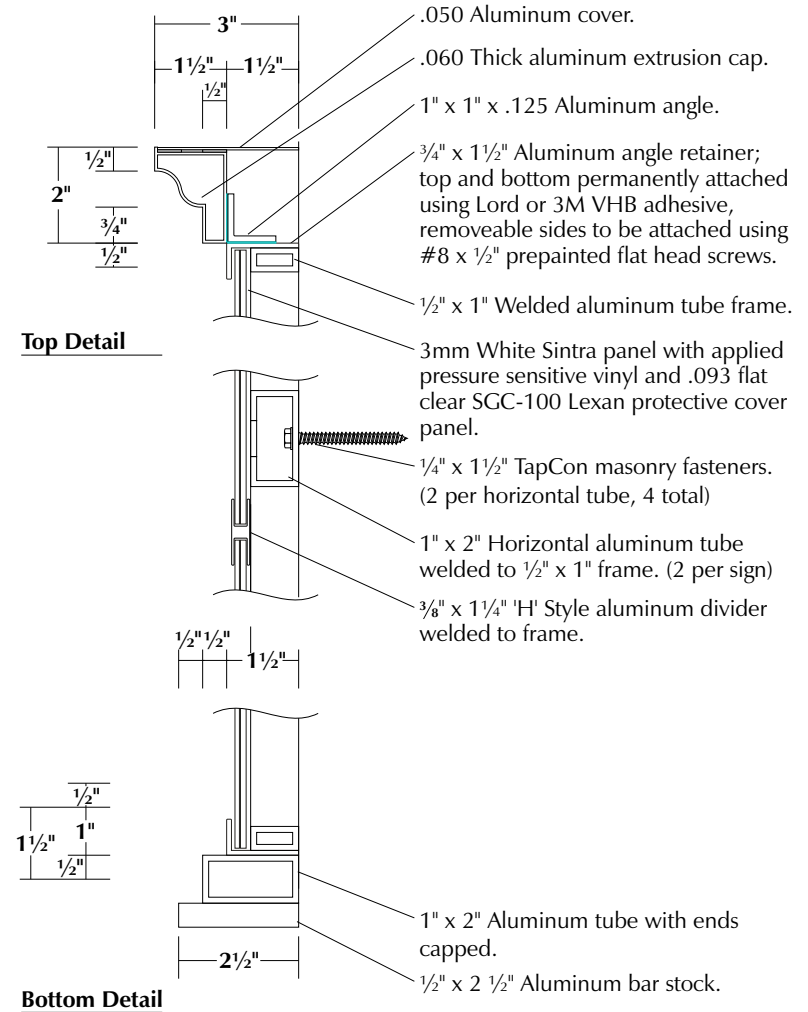
Date: _____



Directional Sign (#7)

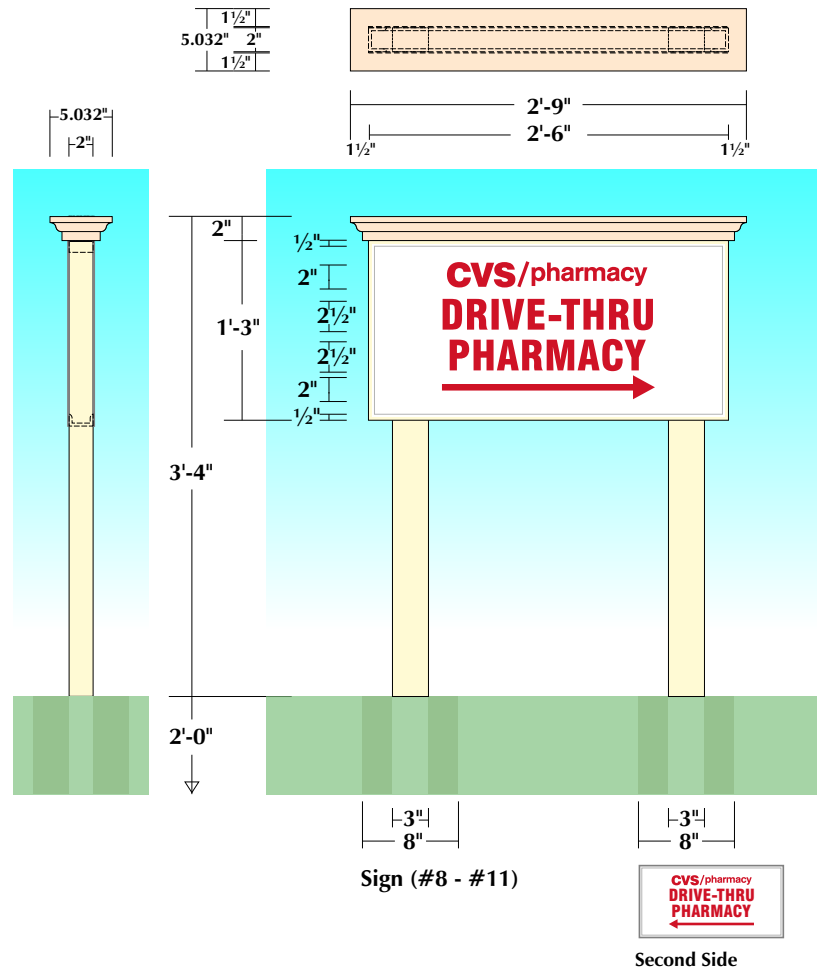
Non-Illuminated Information Panel Scale: 1" = 1'-0"

1 1/2" x 2" x .125" Aluminum top and 1 1/2" x 2 1/2" bottom molding to be painted GripGuard semi-gloss to match BM#HC-47 brookline beige. Retainers and divider bars to be painted GripGuard semi-gloss to match 3M #3630-53 red vinyl.



Details

Scale: 3" = 1'



Cap Detail
 Scale: 3" = 1"
 .060 Thick aluminum

Traffic Control Signs (#8 - #11)

Non-Illuminated Double Faced Directional Sign

Scale: 3/4" = 1'-0"

- 1 1/2" x 2" x .125" Aluminum channel frame with 2" x 3" aluminum legs, painted GripGard semi-gloss to match BM#2154-50 straw. Extruded .060 aluminum top molding to be painted GripGard semi-gloss to match BM#HC-47 brookline beige.
- 1'-3" x 2'-6" x .063 Aluminum face to be painted GripGard semi-gloss to match BM#2154-50 straw and VHB'd to aluminum channel frame with applied 3M white reflective Scotchlite pressure sensitive vinyl background and red reflective pressure sensitive vinyl graphics.
- 8" x 2'-0" Augered Sakrete filled footings.

1'-3" x 2'-6" = 3.12 Sq.Ft.

CVS pharmacy #04350 — 13215 Shaker Square, Cleveland, OH

Lead #MS-6009363

This is an original unpublished drawing, submitted for your use in connection with a project being planned for you by SignArt. It is not to be reproduced, copied or exhibited in any fashion without written permission of SignArt.

©2004

cvs04350

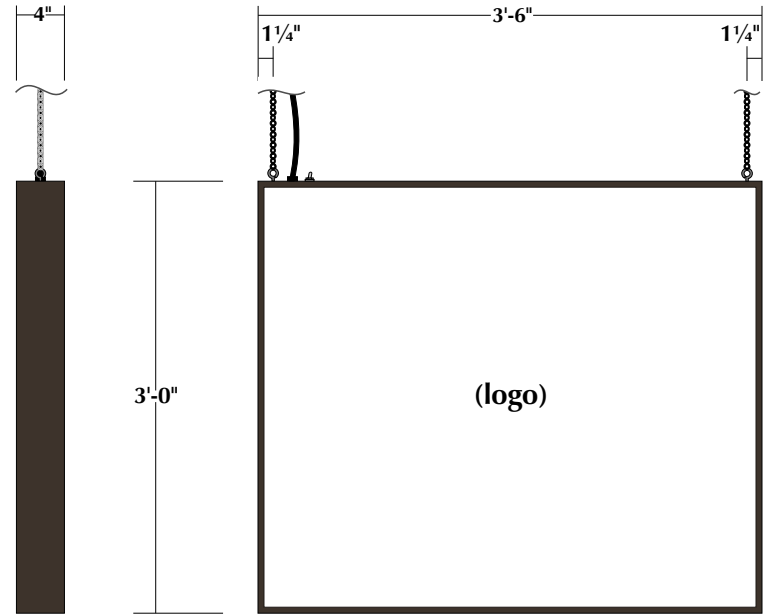
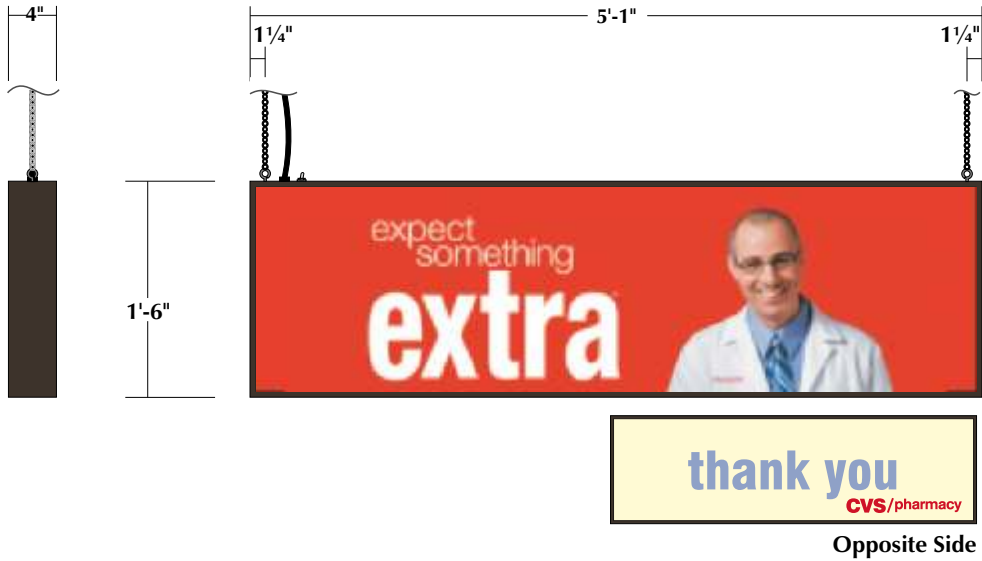
MB 3-8-06
 3-9-06RN
 6-20-06JH

7-14-06DP

Approved for: _____

By: _____

Date: _____



Traffic Control Sign (#12)

Illuminated Interior Sign

Scale : 3/4" = 1'-0"

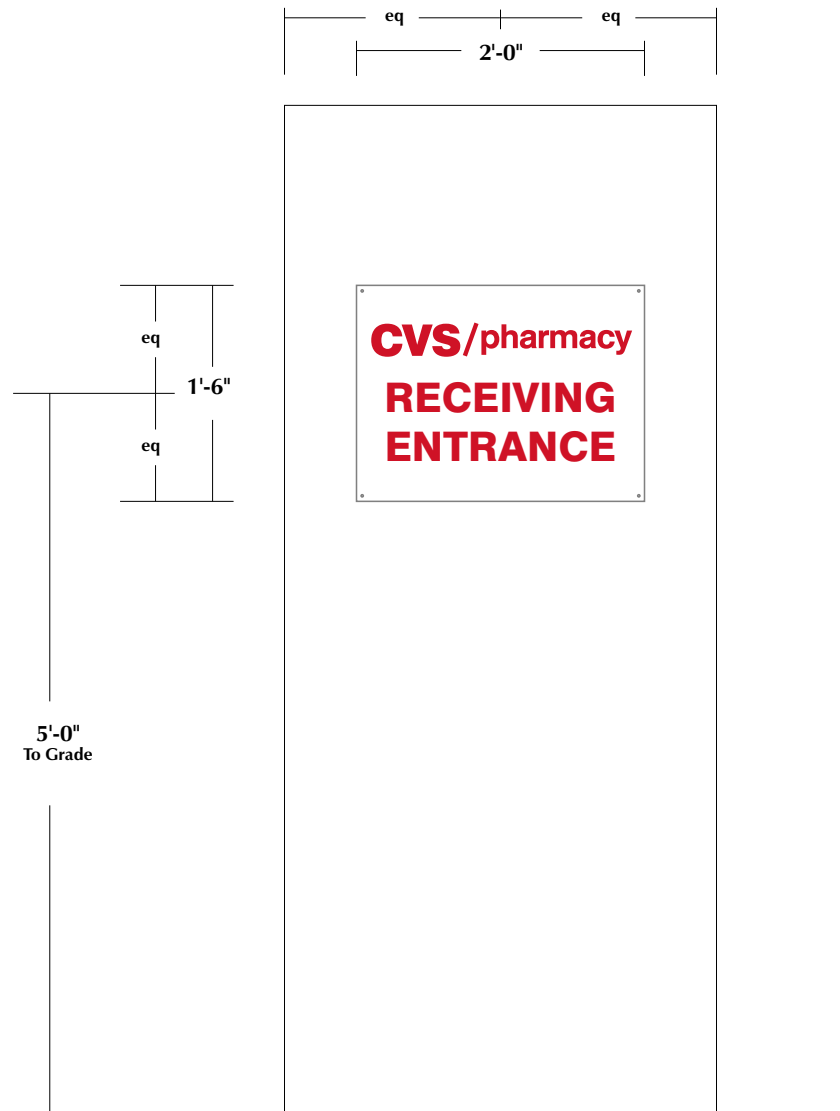
Note: Sign are to be provided by others.

Traffic Control Sign (#13)

Illuminated Window Sign

Scale : 3/4" = 1'-0"

Note: Sign to be provided by others.



Traffic Control Sign (#14)

Non-Illuminated Receiving Door Sign

Scale: $\frac{3}{4}'' = 1'-0''$

- .080 White aluminum face with applied 3M #3630-53 red pressure sensitive vinyl copy.
- Four #8 x 1/2" white pan head sheet metal screws, one at each corner of sign.
- 3/16" Holes on receiving door.
- 5'-0" To center of sign from grade.

1'-6" x 2'-0" = 3.00 Sq.Ft.

CVS pharmacy #04350 — 13215 Shaker Square, Cleveland, OH

Lead #MS-6009363

This is an original unpublished drawing, submitted for your use in connection with a project being planned for you by SignArt. It is not to be reproduced, copied or exhibited in any fashion without written permission of SignArt.

©2004

cvs04350

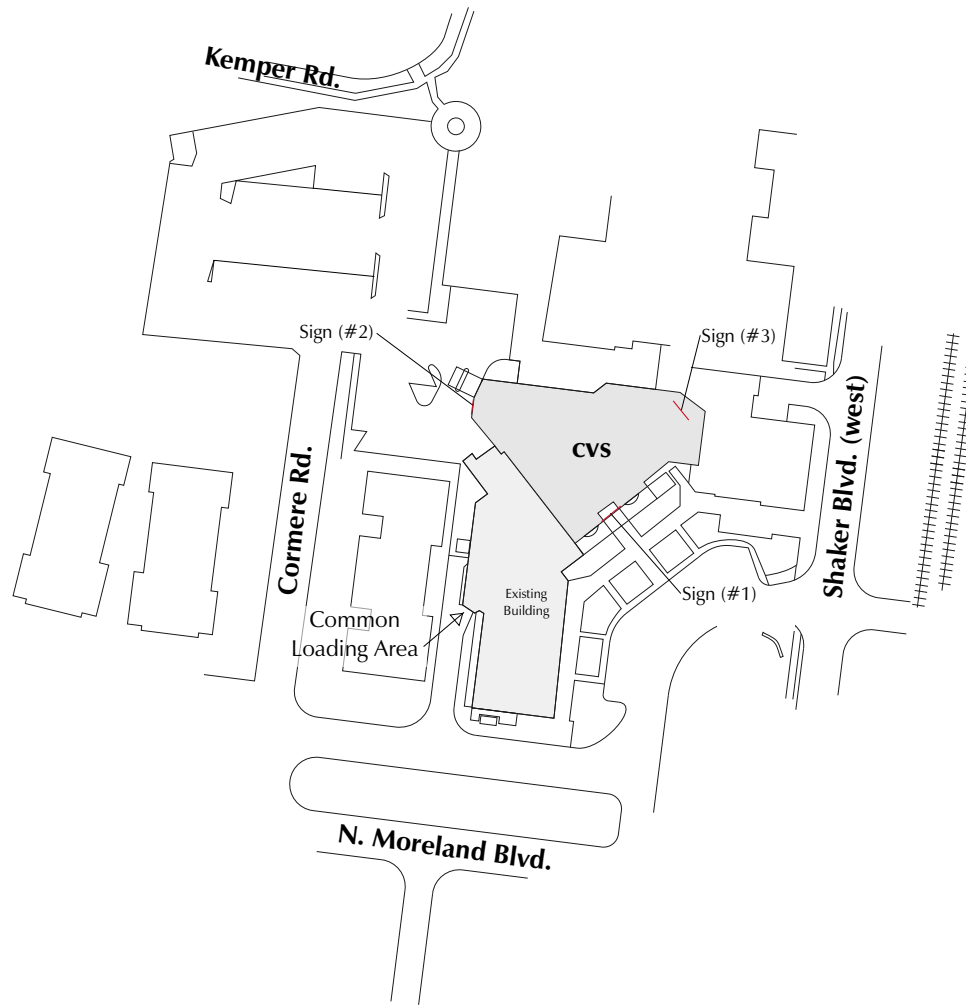
MB 3-8-06
3-9-06RN
6-20-06JH

7-14-06DP

Approved for: _____

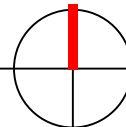
By: _____

Date: _____



Site Plan

Scale: None



CVS pharmacy #04350 — 13215 Shaker Square, Cleveland, OH

Lead #MS-6009363

This is an original unpublished drawing, submitted for your use in connection with a project being planned for you by SignArt. It is not to be reproduced, copied or exhibited in any fashion without written permission of SignArt.

©2004

cvs04350

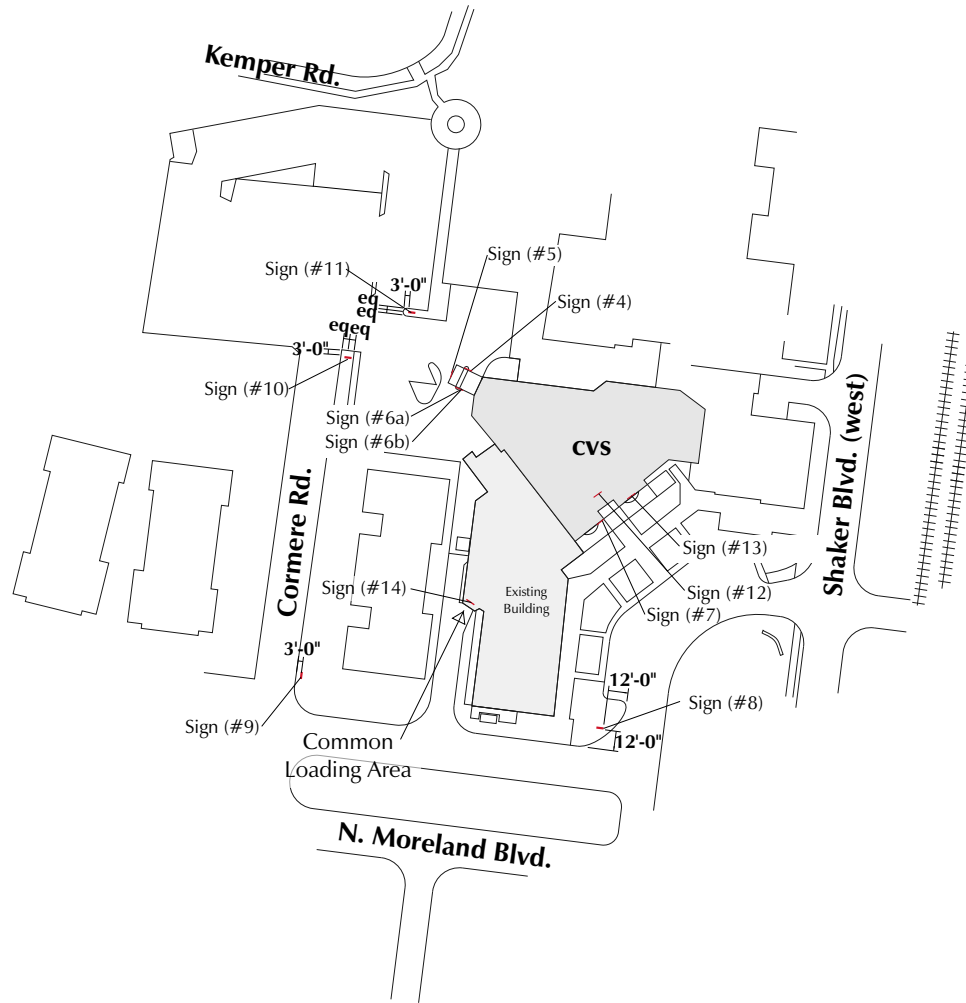
MB 3-8-06
3-9-06RN
6-20-06JH

7-14-06DP

Approved for: _____

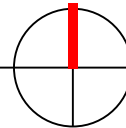
By: _____

Date: _____



Site Plan

Scale: None



CVS pharmacy #04350 — 13215 Shaker Square, Cleveland, OH

Lead #MS-6009363

This is an original unpublished drawing, submitted for your use in connection with a project being planned for you by SignArt. It is not to be reproduced, copied or exhibited in any fashion without written permission of SignArt.

©2004

cvs04350

MB 3-8-06
3-9-06RN
6-20-06JH

7-14-06DP

Approved for: _____

By: _____

Date: _____