













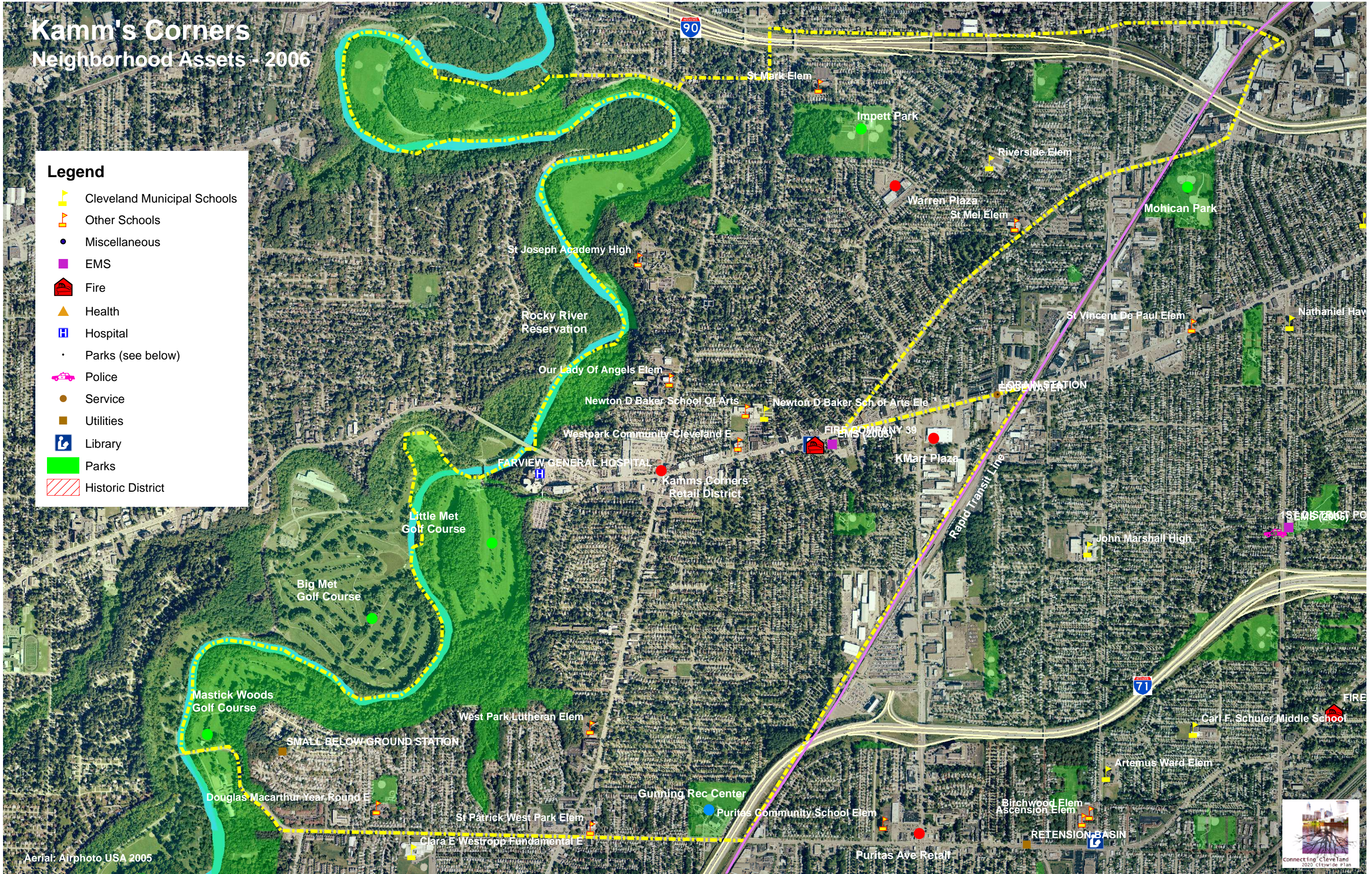


Kamm's Corners Neighborhood Assets - 2006

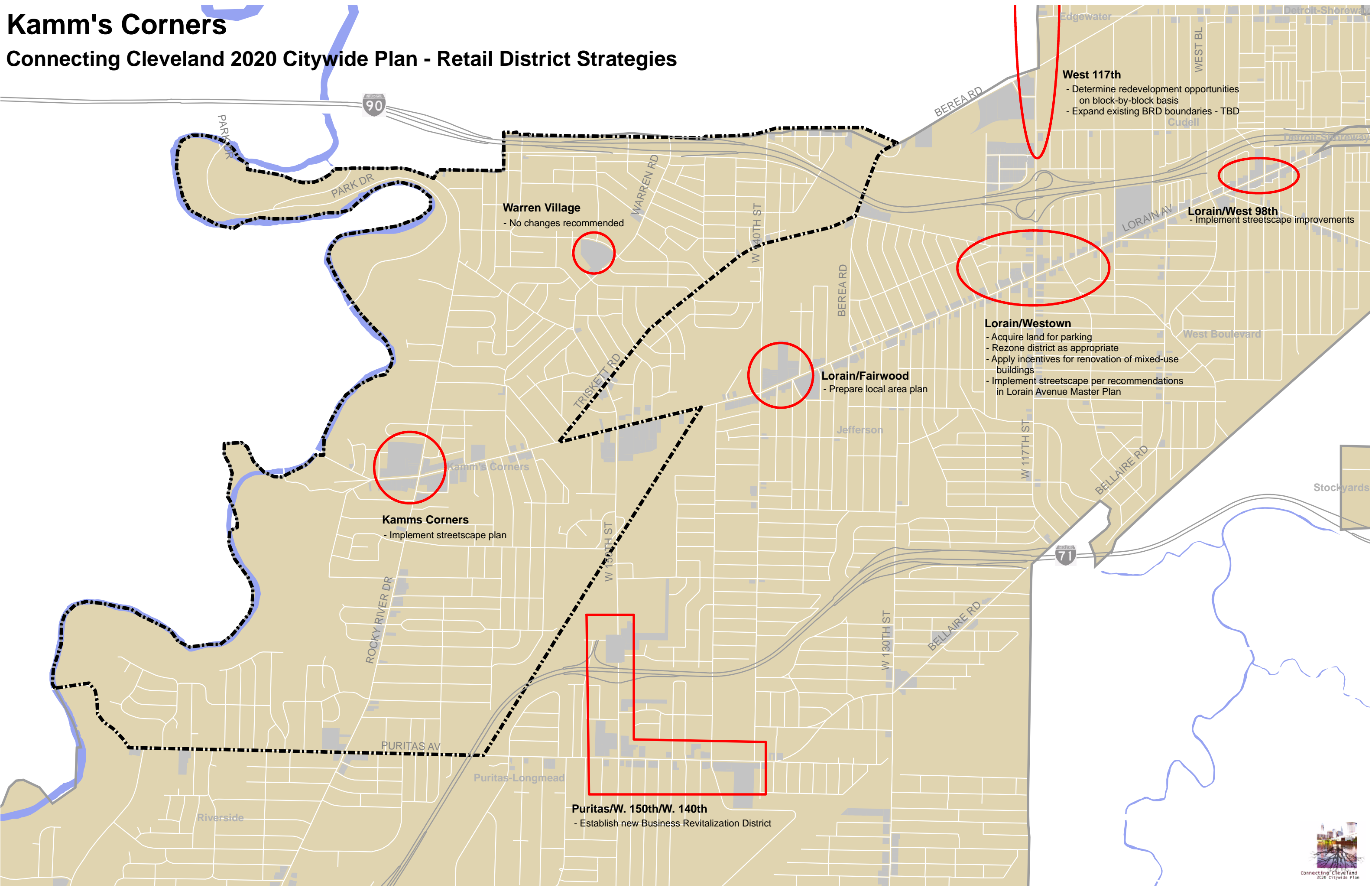
Legend

-  Cleveland Municipal Schools
-  Other Schools
-  Miscellaneous
-  EMS
-  Fire
-  Health
-  Hospital
-  Parks (see below)
-  Police
-  Service
-  Utilities
-  Library
-  Parks
-  Historic District



Kamm's Corners

Connecting Cleveland 2020 Citywide Plan - Retail District Strategies



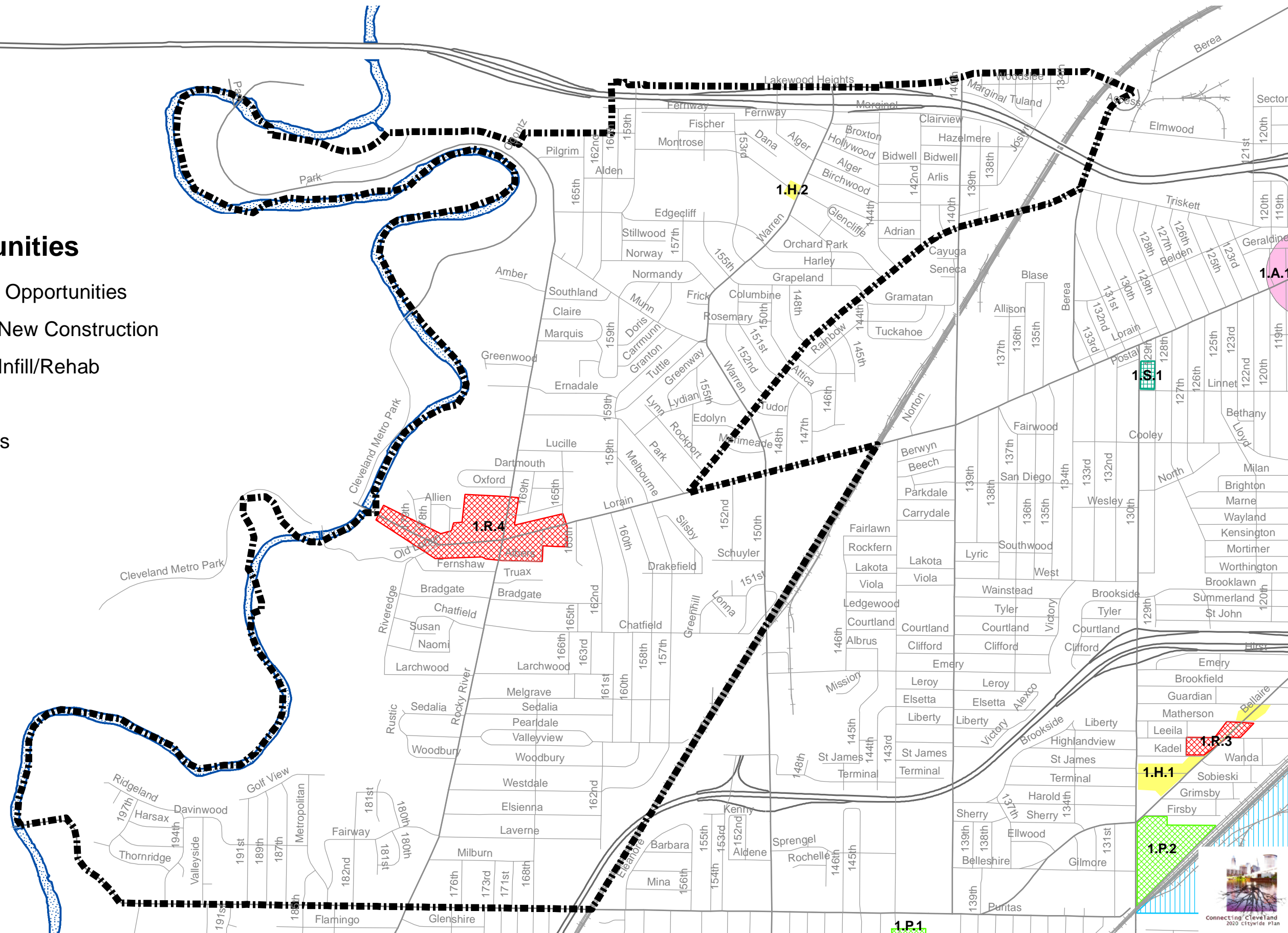
Kamm's Corners

Connecting Cleveland 2020 Citywide Plan - Development Opportunities

- 1.E.1 Emerald Corporate Park – office park development
- 1.E.2 Cleveland Business Park – office and light industrial use
- 1.R.3 Bellaire Corridor – opportunity for full-scale grocery store/mixed-use development

Development Opportunities

-  Economic Development Opportunities
-  Housing Opportunities: New Construction
-  Housing Opportunities: Infill/Rehab
-  Retail Opportunities
-  Recreation Opportunities
-  School Opportunities
-  Arts Opportunities

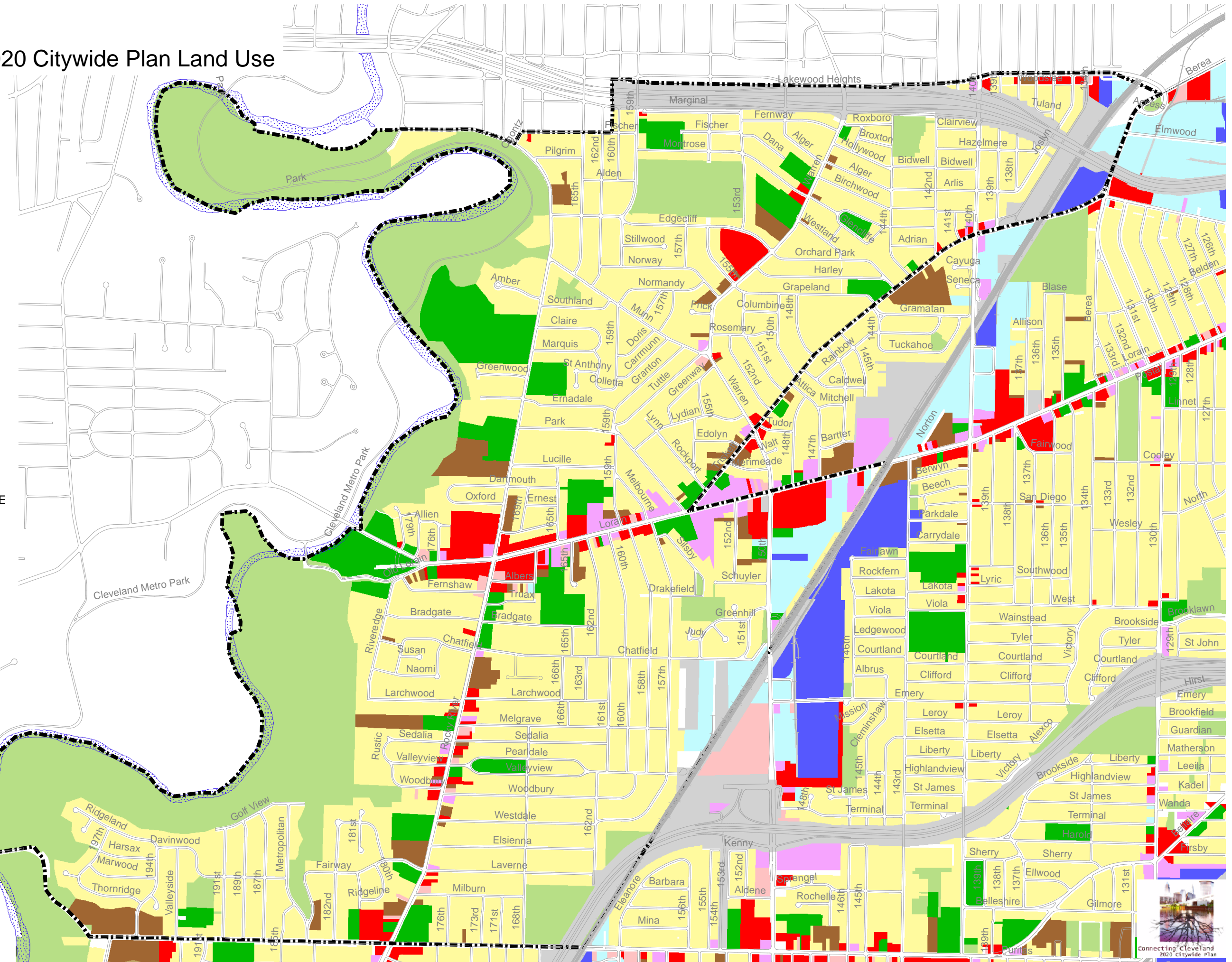


Kamm's Corners

Connecting Cleveland 2020 Citywide Plan Land Use

Existing Land Use - Year 2000

- VACANT LAND
- SINGLE FAMILY
- TWO FAMILY
- TOWNHOUSE
- MIXED USE: LIVE-WORK
- MULTI FAMILY
- OFFICE
- RETAIL
- RETAIL (w/ upper floor uses)
- COMMERCIAL SERVICES
- LIGHT INDUSTRY
- HEAVY INDUSTRY
- INSTITUTIONAL
- RECREATION/OPEN SPACE/LANDSCAPE
- TRANSPORTATION / PUBLIC UTILITIES
- COMMERCIAL PARKING
- KAMM'S CORNERS BOUNDARY
- WATER



Kamm's Corners

Connecting Cleveland 2020 Citywide Plan Land Use

Proposed Land Use - Year 2020

- SINGLE / TWO FAMILY
- MIXED USE: DOWNTOWN
- TOWNHOUSE
- MULTI FAMILY
- MIXED USE: RESIDENTIAL + RETAIL/OFFICE
- MIXED USE: LIVE-WORK
- OFFICE
- RETAIL
- COMMERCIAL SERVICES
- LIGHT INDUSTRY
- HEAVY INDUSTRY
- INSTITUTIONAL
- RECREATION/OPEN SPACE/LANDSCAPE
- TRANSPORTATION / PUBLIC UTILITIES
- PARKING (DOWNTOWN ONLY)
- KAMM'S CORNERS BOUNDARY
- WATER

