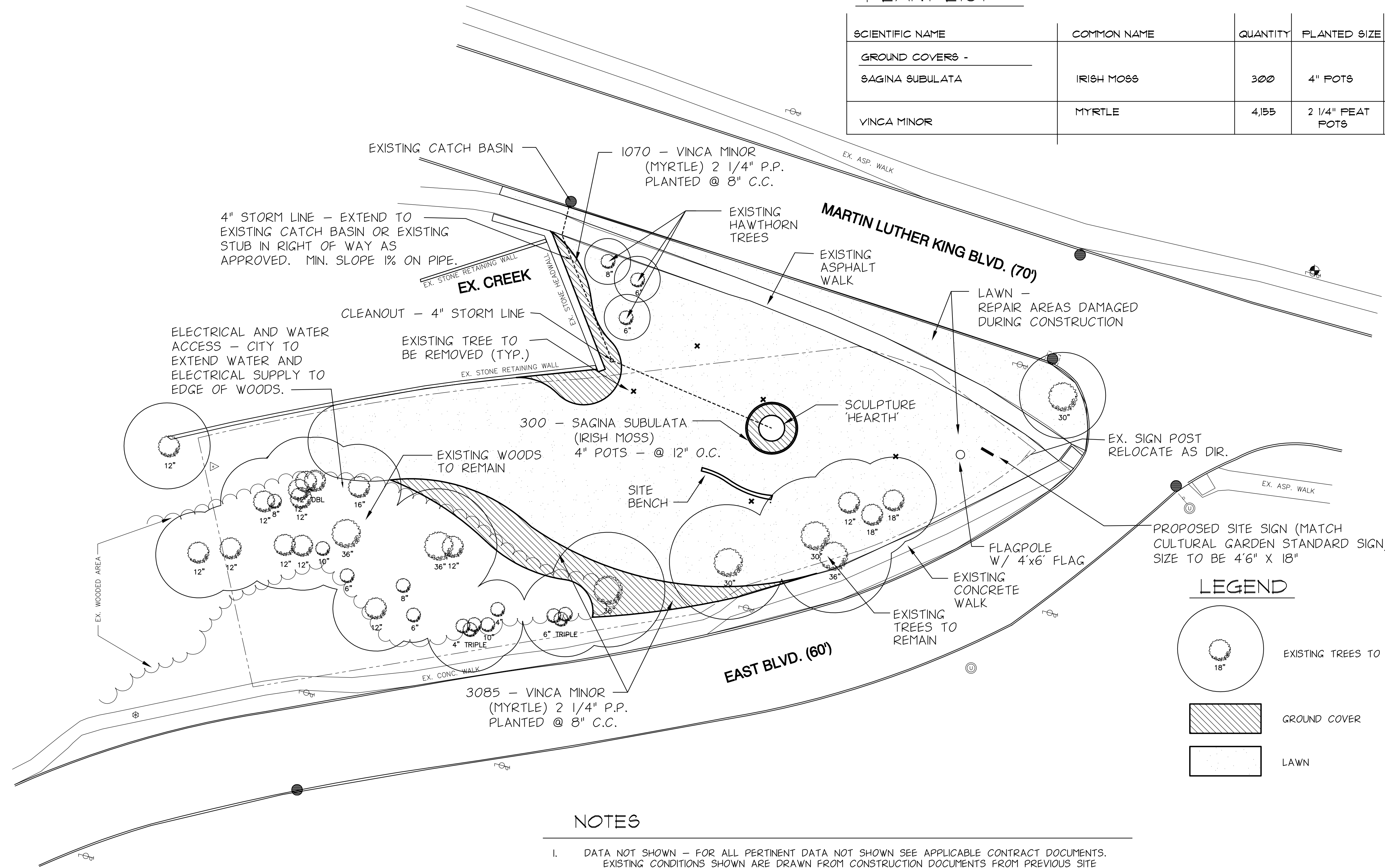
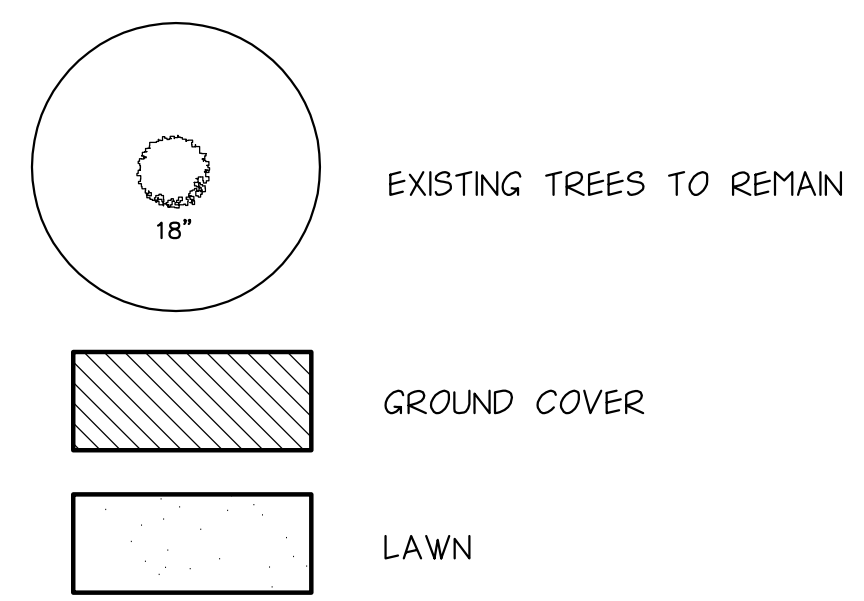


PLANT LIST

SCIENTIFIC NAME	COMMON NAME	QUANTITY	PLANTED SIZE	MATURE SIZE
GROUND COVERS -				
SAGINA SUBULATA	IRISH MOSS	300	4" POTS	4" HT.
VINCA MINOR	MYRTLE	4,155	2 1/4" PEAT POTS	12" HT.

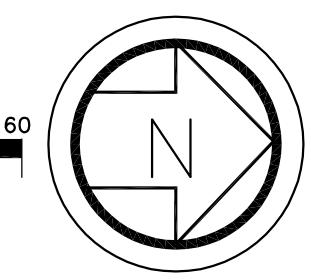
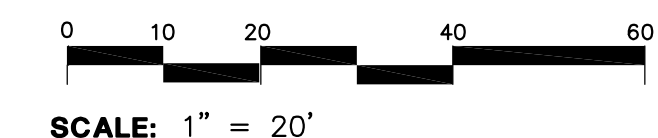


LEGEND



NOTES

1. DATA NOT SHOWN - FOR ALL PERTINENT DATA NOT SHOWN SEE APPLICABLE CONTRACT DOCUMENTS. EXISTING CONDITIONS SHOWN ARE DRAWN FROM CONSTRUCTION DOCUMENTS FROM PREVIOUS SITE DEVELOPMENT. CONTRACTOR SHALL VERIFY ALL EXISTING CONDITIONS IN THE FIELD. NOTIFY ARCHITECT OF ANY DISCREPANCIES.
2. MEASUREMENTS - THE CONTRACTOR SHALL VERIFY ALL MEASUREMENTS IN THE FIELD.
3. EXISTING UTILITIES - THE EXISTING UTILITY DATA SHOWN IS FOR REFERENCE INFORMATION ONLY AND MAY NOT SHOW ALL EXISTING UTILITIES OR UTILITY DATA.
4. WORK WITHIN THE RIGHT-OF-WAY - WORK WITHIN THE RIGHT OF WAY SHALL BE AS DIRECTED AND APPROVED BY THE PROPER AUTHORITY.
5. EXISTING PLANT MATERIAL SHOWN - ALL EXISTING PLANT MATERIAL IS NOT SHOWN, REMOVE ONLY AS DIRECTED IN THE FIELD.
6. PLANTING - THE PLANT MATERIAL LOCATIONS SHOWN ARE SCHEMATIC. THE CONTRACTOR SHALL SET THE PLANTS IN THE BEDS APPROXIMATELY AS SHOWN. THE ARCHITECT WILL APPROVE THE LAYOUT PRIOR TO THE CONTRACTOR DIGGING THE HOLES. ALL PLANT MATERIALS SHALL CONFORM TO ANSI Z60.1 STANDARDS, LATEST EDITION.
7. MULCH - SHALL BE DOUBLE SHREDDED HARDWOOD BARK MULCH AGED A MIN. OF 3 MONTHS AND WITH A pH OF 4.5 TO 5.0. SPREAD MULCH OVER PLANT BEDS AND ON TREE RINGS AT A MIN. THICKNESS OF 2 INCHES.
8. GUARANTEE - ALL PLANT MATERIALS SHALL BE GUARANTEED FOR ONE FULL YEAR AFTER PLANTING AND ACCEPTANCE BY THE OWNER/ARCHITECT.
9. LAWN - CONTRACTOR SHALL SEED TO LAWN ALL AREAS INSIDE CONSTRUCTION AREA, ADDITIONAL AREAS DISTURBED BY CONSTRUCTION AND NOT OTHERWISE OCCUPIED BY STRUCTURES, PAVEMENTS OR PLANT BEDS.
10. EXISTING TREES ON SITE - CONTRACTOR SHALL PROVIDE SELECTIVE PRUNING FOR EXISTING VEGETATION ON SITE. REMOVE ALL DEAD, DISEASED OR DYING LIMBS AS DIRECTED IN THE FIELD.



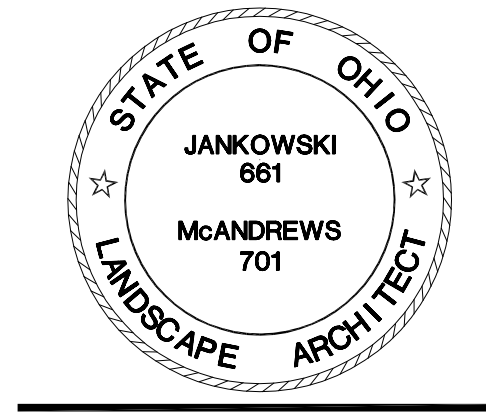
CONTRACTOR SHALL EXERCISE CAUTION DURING ALL CONSTRUCTION OPERATIONS IN VICINITY OF UNDERGROUND PIPES, CABLES AND DUCTS. CONTRACTOR SHALL INFORM AND COORDINATE WORK IN SUCH AREAS WITH PROPER UTILITY COMPANY OR MUNICIPAL AUTHORITY. CALL O.U.P.S. 1-800-362-2764

ISSUED / REVISED		
NO.	DATE	DESCRIPTION
10/27/06		REVISION PER CCGF

KNIGHT & STOLAR INC.

PLANNING CONSULTANTS & LANDSCAPE ARCHITECTS

3029 PROSPECT AVENUE
CLEVELAND, OHIO 44115
TELEPHONE: (216) 391-0910
FAX: (216) 391-0920



Cleveland Cultural Gardens
#29 Azerbaijan Garden
Cleveland, Ohio

Planting Plan

DRAWN KAJ CHECKED MSM
DATE 10.06.08
PROJECT NO. 0627
PLAN NO.

L-1