

SITE PLAN
SCALE 1:20



GRAPHIC LEGEND

	PROPOSED LOT LINE		PROPOSED LOT AREA
	PROPOSED BUILDING FOOTPRINT		PROPOSED DRIVEWAY
	PROPOSED PARKING SPACE		PROPOSED SIDEWALK
	PROPOSED STREET		PROPOSED UTILITY

SCHEDULE OF PROPOSED PARKING

Category	Number of Spaces	Notes
Handicap	2	ADA Compliant
Motor Vehicle	206	
Total	208	



UNION GOSPEL PRESS
734 WEST 7TH STREET
CLEVELAND, OHIO 44115



REVISIONS

NO.	DATE	DESCRIPTION



SITE PLAN
DATE: _____

AC.1

GENERAL NOTES: SEE SEPARATE SHEETS FOR ALL DIMENSIONS AND NOTES. ALL DIMENSIONS ARE TO FACE UNLESS OTHERWISE NOTED.



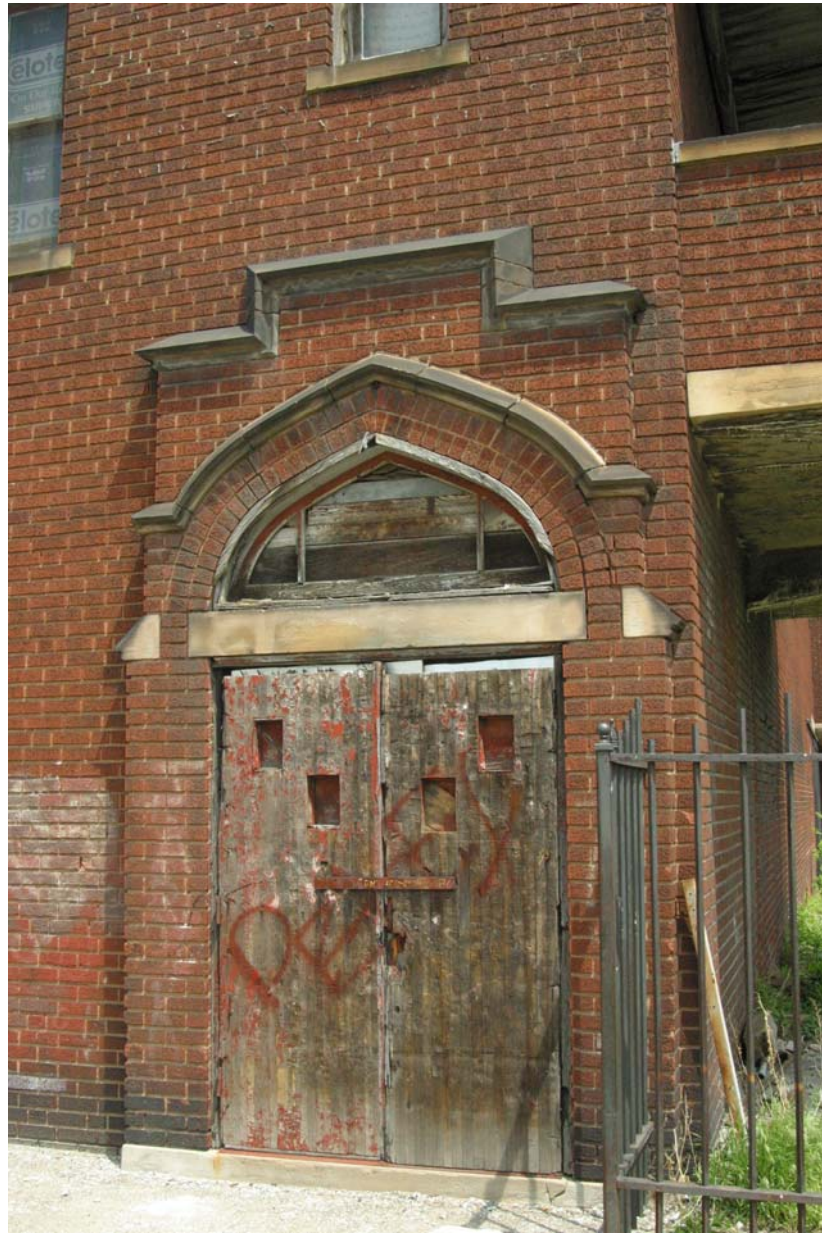






























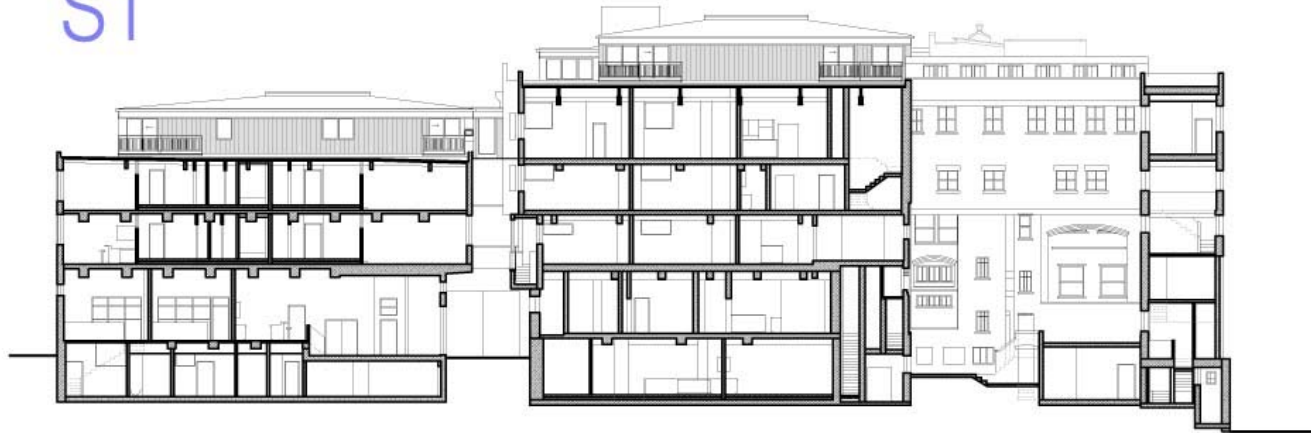




S



S1





A NORTH ELEVATION
7 SCALE: N.T.S.



JEFFERSON AVE. ELEVATION

0 8 16 32
SCALE: 1/16" = 1'-0"



THURMAN ST. ELEVATION

0 8 16 32
SCALE: 1/16" = 1'-0"



SANDVICK ARCHITECTS

1265 WEST SIXTH STREET CLEVELAND, OHIO 44113
PHONE: (216) 621-8066 FAX: (216) 687-1814

Adaptive Reuse and Historic Preservation of the
UNION GOSPEL PRESS

10 JEFFERSON AVENUE
CLEVELAND, OHIO
An Historic Tax Credit Rehabilitation Project

PARKING GARAGE
SECTION 4: SHEET 3
ELEVATIONS



SECTION A

0 8 16 32
SCALE: 1/16" = 1'-0"



SECTION B

0 8 16 32
SCALE: 1/16" = 1'-0"



SANDVICK ARCHITECTS
1265 WEST SIXTH STREET CLEVELAND, OHIO 44113
PHONE: (216) 621-8066 FAX: (216) 687-1814

Adaptive Reuse and Historic Preservation of the
UNION GOSPEL PRESS

710 JEFFERSON AVENUE
CLEVELAND, OHIO
An Historic Tax Credit Rehabilitation Project

PARKING GARAGE
SECTION 4: SHEET 4
SECTIONS

Ordering Guide

Large and Small Arealyte Ordering Guide

1 HOUSING	2 ARM	3 MOUNTING	4 FINISH
 <p>PA3 Large</p>  <p>PA2 Small</p>	<p>S Straight Arm</p>  <p>C Curved Arm</p> <p>*HT Horizontal Slipfitter 2 1/2" O.D. Horizontal Mast Arm</p>  <p>*AT Adjustable Arm Vertical 2 1/2" O.D. x 4" Pole Top Tension Adapter</p>	<p>3 3" O.D. Round Pole</p> <p>4 4" O.D. Round Pole</p> <p>5 5" O.D. Round Pole</p> <p>6 6" O.D. Round Pole</p> <p>S Square Pole</p> <p>W Wall Mount</p> <p>* Used only with straight arm.</p>	<p>A Black</p> <p>B White</p> <p>H Bronze</p> <p>X Silver</p>

* Do not specify mounting.

PA3 C 4 A

Ordering Example: PA3C4A3400HGV

HADCO

PA14

TearDrop

Street and Roadway Lighting



TearDrop luminaires complement streetscape, commercial or recreational areas, adding warmth and elegance to any architectural setting. Reminiscent of a bygone era, they offer exceptional craftsmanship in fixtures that are as flexible as they are beautiful. The TearDrop can be matched to a full line of HADCO mounting systems.

HADCO®

TF.1

Polymer Concrete Base, Composite Decorative Tuff-Poles®

Shakespeare Composite Structures™ new, decorative Tuff-Pole® with advanced-design Polymer Concrete Base brings the extreme durability of our innovative Tuff-Protector to decorative poles. One-piece construction and direct burial design make short work of pole installation. The poles' light weight makes them easily transportable. Any of the four fiberglass reinforced composite shaft styles can be supplied for any of the four elegant base shapes - in Shakespeare's full palette of colors.

EPA Ratings

Polymer Concrete Series shafts are engineered to withstand at least 100 MPH wind forces (calculated per AASHTO standards and including a 30% gust factor), with luminaires up to 6.0 square feet (sq) weighing up to 150 lbs. of post top load. For other loading requirements, contact the factory.

How To Order

Order Shakespeare's Polymer Concrete Base Composite Decorative Tuff-Poles® according to the ordering logic below.

Options

Weatherproof receptacle mounted 9" from top of pole 90° clockwise to the hand hole; add "W1" to the catalog number. For other options, specify or contact factory.

Banner arms, flag brackets, luminaires, and other attachments are available, contact factory.

Decorative twin cross arms are available, see arms and brackets brochure for details.



Catalog Numbers

for Polymer Concrete Base, Composite Decorative Tuff-Poles®

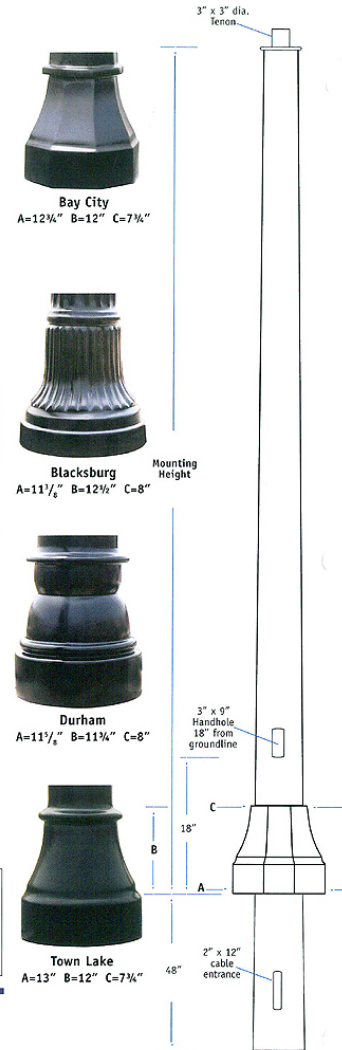
All P-series poles are Direct Burial style.
3" x 9" Handhole standard.

Style Bay City=BC13 Blacksburg=BK13 Durham=DH12 Town Lake=TL13	Shaft Type E=10-Flute F=16-Flute O=Octagonal S=Smooth Round	Color 1=Black 2=Gray 3=Brown 4=Dk Green 5=Dk Bronze 6=Silver 7=White 9=Specify*	Options (See "Options" above)
---	--	--	---

P DH12 - 9.5 E G 1 2

Polymer Concrete Series	Mounting Height (ft.) 9.5, 12, 14.5 (or custom)	Max: 10-Flute 15' 16-Flute 15' Smooth 20' Octagonal 20'	Finish G=Gloss S=Semi-gloss 9=Special	Direct Burial Conduit Entrance Location from bottom of pole															
				<table border="1"> <tr> <td></td> <td>1 ea. 2"x12"</td> <td>2 ea. 2"x12" @ 180°</td> </tr> <tr> <td>12"</td> <td>2</td> <td>3</td> </tr> <tr> <td>18"</td> <td>4</td> <td>5</td> </tr> <tr> <td>24"</td> <td>6</td> <td>7</td> </tr> <tr> <td>Other (specify)</td> <td>0</td> <td>0</td> </tr> </table>		1 ea. 2"x12"	2 ea. 2"x12" @ 180°	12"	2	3	18"	4	5	24"	6	7	Other (specify)	0	0
	1 ea. 2"x12"	2 ea. 2"x12" @ 180°																	
12"	2	3																	
18"	4	5																	
24"	6	7																	
Other (specify)	0	0																	

*Standard, premium, and architectural colors are available.
See Shakespeare Composite Structures™ Color Palette brochure.



19845 Highway 76 - Newberry, SC 29108
803.276.5504 · F/803.276.8940 · Toll-free in U.S.A.: 800.800.9008 · www.skp-cs.com

A Division of Gentyte Thomas Group, LLC

©2003 Shakespeare Composite Structures - Form PCD-1 (1003) J: 10M 1003 WP



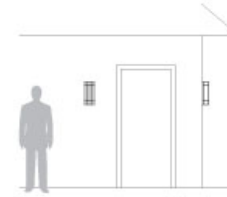
COLONNADE™



OW1048



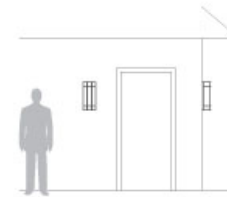
W	H	D	MC
2-1/4"	18"	5-3/8"	3"
58mm	457mm	131mm	76mm



OW1050



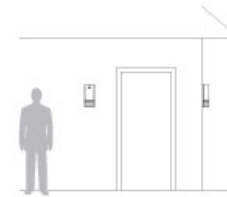
W	H	D	MC
8-1/4"	20-1/4"	8-3/8"	1 1/2"
215mm	514mm	212mm	38mm



OW1052



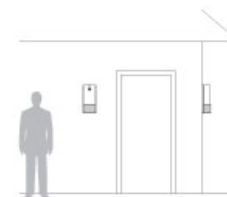
W	H	D	MC
2-1/4"	18"	5-3/8"	3"
58mm	457mm	131mm	76mm

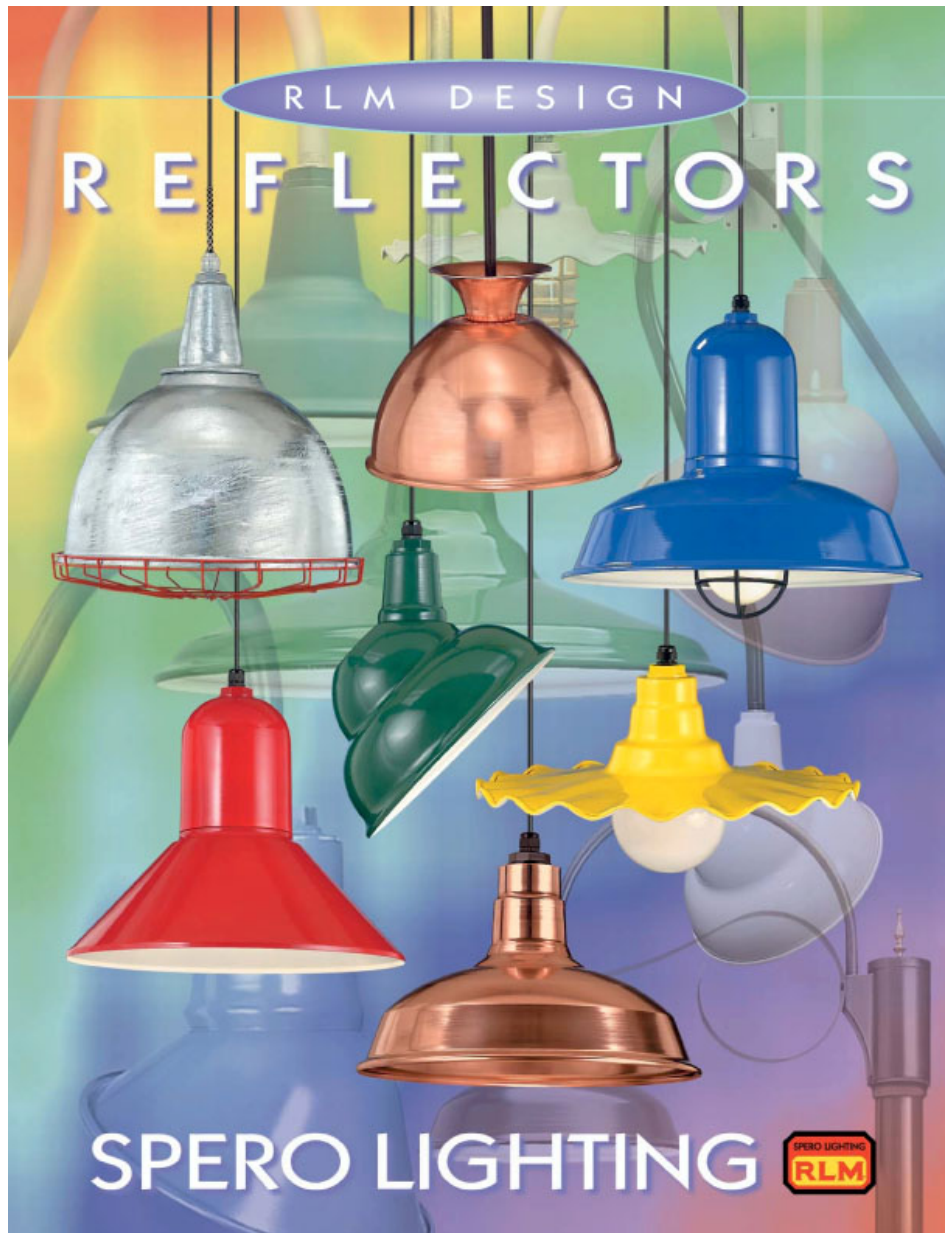


OW1054



W	H	D	MC
8-1/4"	20-1/4"	8-3/8"	1 1/2"
215mm	514mm	212mm	38mm







STERN[™]
LIGHTING SYSTEMS INC.



INFRANOR[™]
CALLISTO-12
Precision Floodlighting

WALL GRAZER Applications



Up Facing Applications

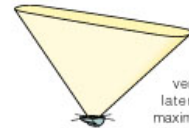
The Wall Grazer optical configuration projects an intense sheet of light up the wall for highlighting reliefs, projections and surface textures. 10° of fine adjustment, aiming the band of illumination for greatest effect is easily accomplished.

Wall grazing should not be confused with "façade lighting," which is normally produced by floodlights set back from the wall to create uniform lighting. Wall grazing will light the wall to a limited degree, but its real purpose is to create highlight effects, rather than uniform wall washing.

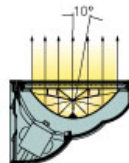


Down Facing Applications

As a down facing light, the Wall Grazer can be used to provide increased security lighting for building perimeters. For this application the fixture would be mounted high on the building façade because of its narrow beam pattern. Sidewalks, alleys and pathways can be highlighted for pedestrian security and safety, with minimal light contribution into adjacent areas or buildings. The adjustment feature is used to precisely aim the band of illumination.



The Wall Grazer's unique distribution creates dramatic, and very distinct highlighting effects. Its lateral coverage is very wide to maximize fixture spacing.



Fine aiming adjustments for maximizing lighting effects can be accomplished with the fixtures in operation. The Wall Grazer reflector assembly is designed with a built-in -3° tilt toward the wall surface.



Wall Grazer louver vanes control brightness on wall surfaces directly above or below the fixture.

Wall Graze Lighting

When a building façade is designed to have interesting surface texture, reliefs, projections or other embellishments, grazing the wall with light can produce dramatic nighttime effects. Standard oval floodlight beam patterns are not suited to this application.





KERN LIGHTING 1

