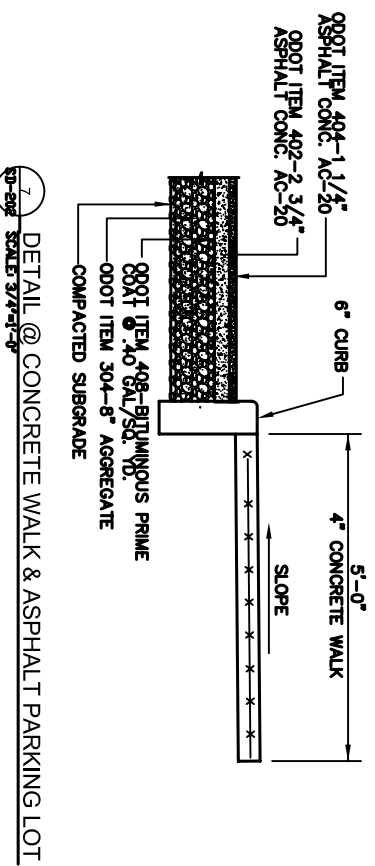
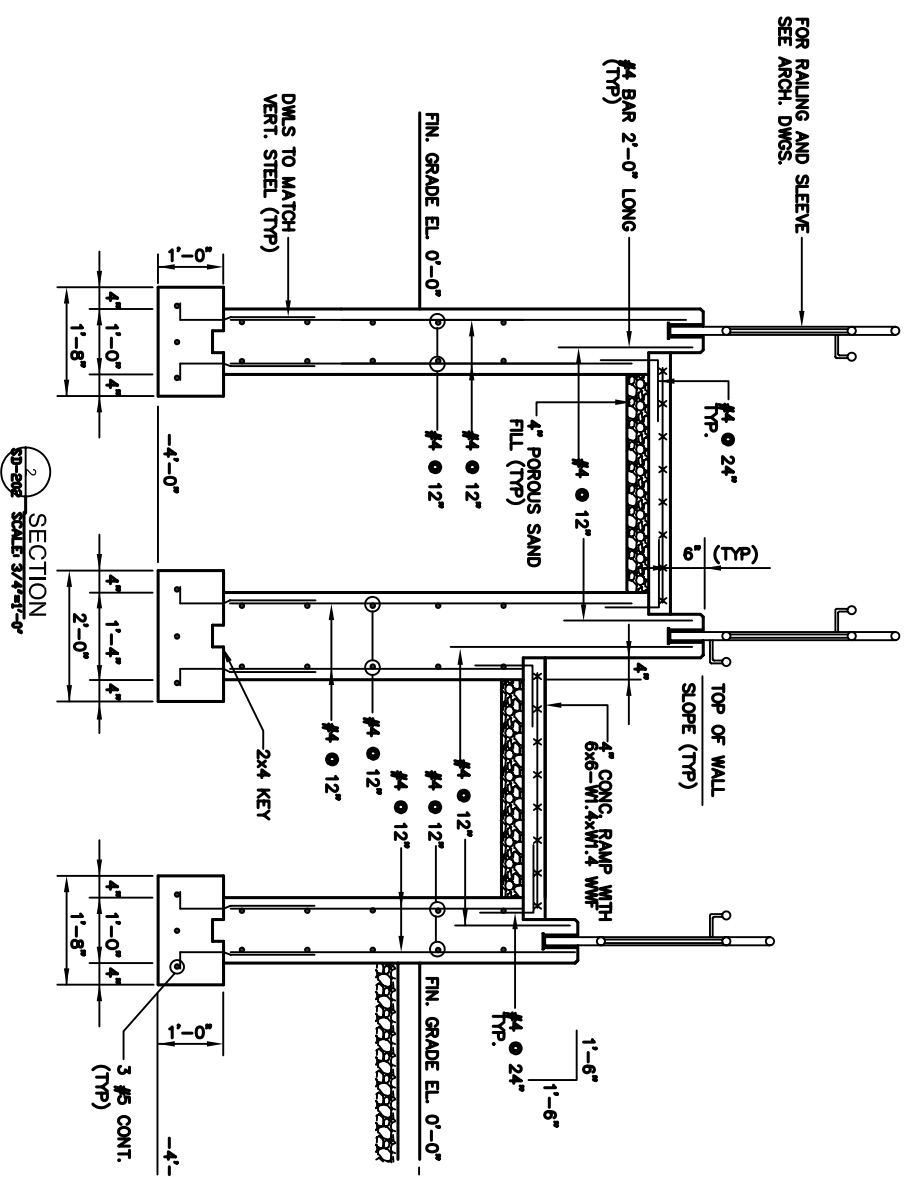
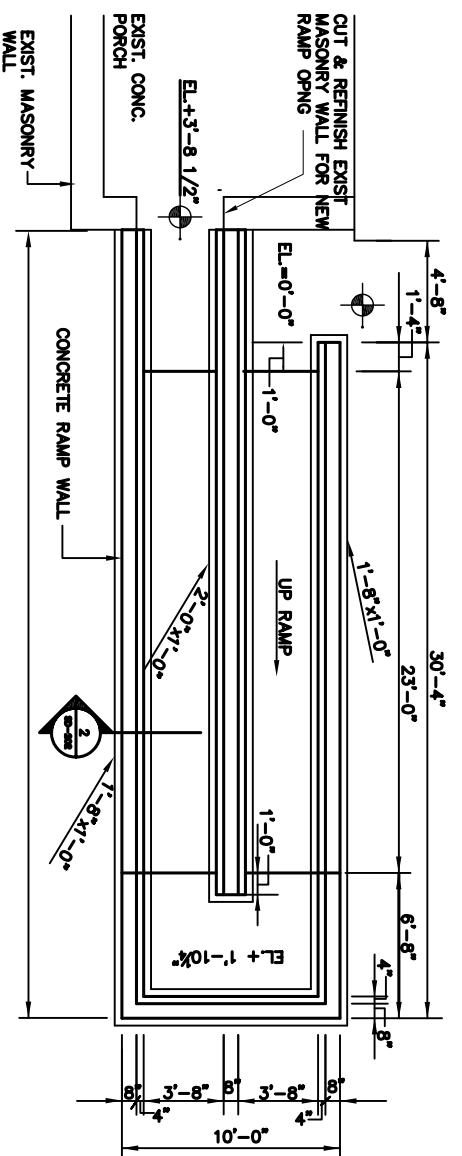


- ### CAST-IN-PLACE CONCRETE
- 1) ULTIMATE COMPRESSIVE STRENGTH OF ALL CONCRETE IN 28 DAYS: 4000psi U.N.O.
  - 2) REINFORCING BARS: ASTM A615, GRADE 60, fy = 60,000 psi
  - 3) WELDED WIRE FABRIC: ASTM A 185.
  - 4) ALL EXPOSED CORNERS OF CONCRETE ARE CHAMFERED 45° MINIMUM. CHAMFER TO BE 1/2".
  - 5) LAPS FOR ALL REBAR SHOULD BE PER AC-318.
  - 6) PROVIDE TOoled CONTROL JOINT AT CENTER OF RAMP 1/4" WIDE 3/4" DEEP.
  - 7) ASPHALT CONCRETE WORK SHOULD BE PERFORMED IN ACCORDANCE TO ITEM 446 OF OHIO DEPARTMENT OF TRANSPORTATION CONSTRUCTION AND MATERIAL SPECIFICATION LATEST EDITION.
  - 8) CONCRETE CURBS AND SIDEWALK WORK SHOULD BE ITEM 608 OF ODOT CONSTRUCTION MATERIAL SPECIFICATION LATEST EDITION



**Emeritus House  
Historic Restoration**  
4450 Cedar Avenue  
Cleveland Ohio, 44103

Robert P. Madison International, Inc  
Architects · Engineers · Planners  
2930 Euclid Avenue  
Cleveland, Ohio 44115  
Tel. 216-861-8195 Fax: 216-821-8738

Mechanical Engineer  
**POINT ONE DESIGN, LTD**  
Consulting Engineers  
Tel: (440) 230-1880 Fax: (440) 230-1851

Developers:  
PVA EBERTS LLC  
Phillips Wheatley  
Association  
4490 Cedar Avenue  
Cleveland, Ohio 44103  
Tel. 216-391-4433  
Fax: 216-791-6685

Contractors:  
Marous Brothers  
Construction  
1792 Joseph Lord Parkway  
Willoughby, OH 44094  
Cleveland, Ohio 44115  
Tel. 440-951-3804  
Fax: 440-951-3701

Building Managers  
ABC Management  
P.O. Box 228055  
22875 Commerce Park  
Cleveland, Ohio 44122  
Tel. 216-591-0881  
Fax: 216-591-1182

REVISIONS		
NO.	DATE	REMARK

DATE: 6-9-06  
SCALE: AS NOTED  
DRAWN: RCW  
CHECKED: LJ  
PROJECT NO.: 0329

Site Details

**SD-202**