

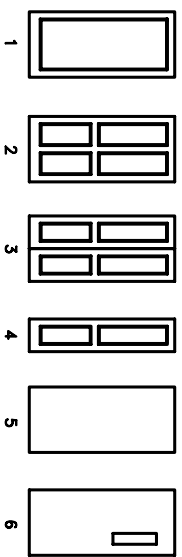
THIRD THRU NINTH FLOOR DOOR SCHEDULE

SC-WD - SOLID CORE WOOD
 MAS - MASONITE
 HM - HOLLOW METAL

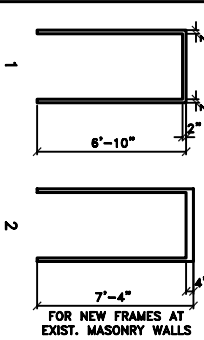
DOOR MARK	DOOR SIZE	DOOR		FRAME		FIRE RATING	HARD WARE GROUP	NOTES
		TYPE	MATL.	TYPE	MATL.			
A	3'-0" x 6'-8"	1	SC-WD	1	HM	3/4 HR.		1
B	3'-0" x 6'-8"	2	MAS	1	HM			2
C	3'-0" x 6'-8"	2	MAS	1	HM			2
D	PAIR 1'-8" x 6'-8"	4	MAS	1	HM			2
E	PAIR 3'-2" x 6'-8"	3	MAS	1	HM			2
F	1'-10" x 6'-8"	4	MAS	1	HM			2
G	3'-0" x 7'-0"	5	HM	2	HM	1 1/2HR		
H	3'-0" x 6'-8"	6	HM	1	HM			
I	PAIR 3'-4" x 6'-8"	5	HM	1	HM	3/4 HR.		
J	3'-0" x 6'-8"	5	HM	1	HM	1 1/2HR		
K	2'-8" x 6'-8"	2	MAS	1	HM			

- NOTES:
 1. PROVIDE PEEP HOLE AT ACCESSIBLE HEIGHT FOR ACCESSIBLE UNITS.)
 (PROVIDE PEEP HOLE AT ACCESSIBLE HEIGHT FOR ACCESSIBLE UNITS.)
 2. 18 GA HM KNOCK DOWN FRAME PRE-FINISHED WITH 2" CASING
 3. DOOR I & J OCCUR AT SEVERAL FLOORS ONLY, SEE ELECTRICAL DRAWINGS, RISE/DIAGRAMS FOR LOCATIONS

DOOR TYPES



FRAME TYPES

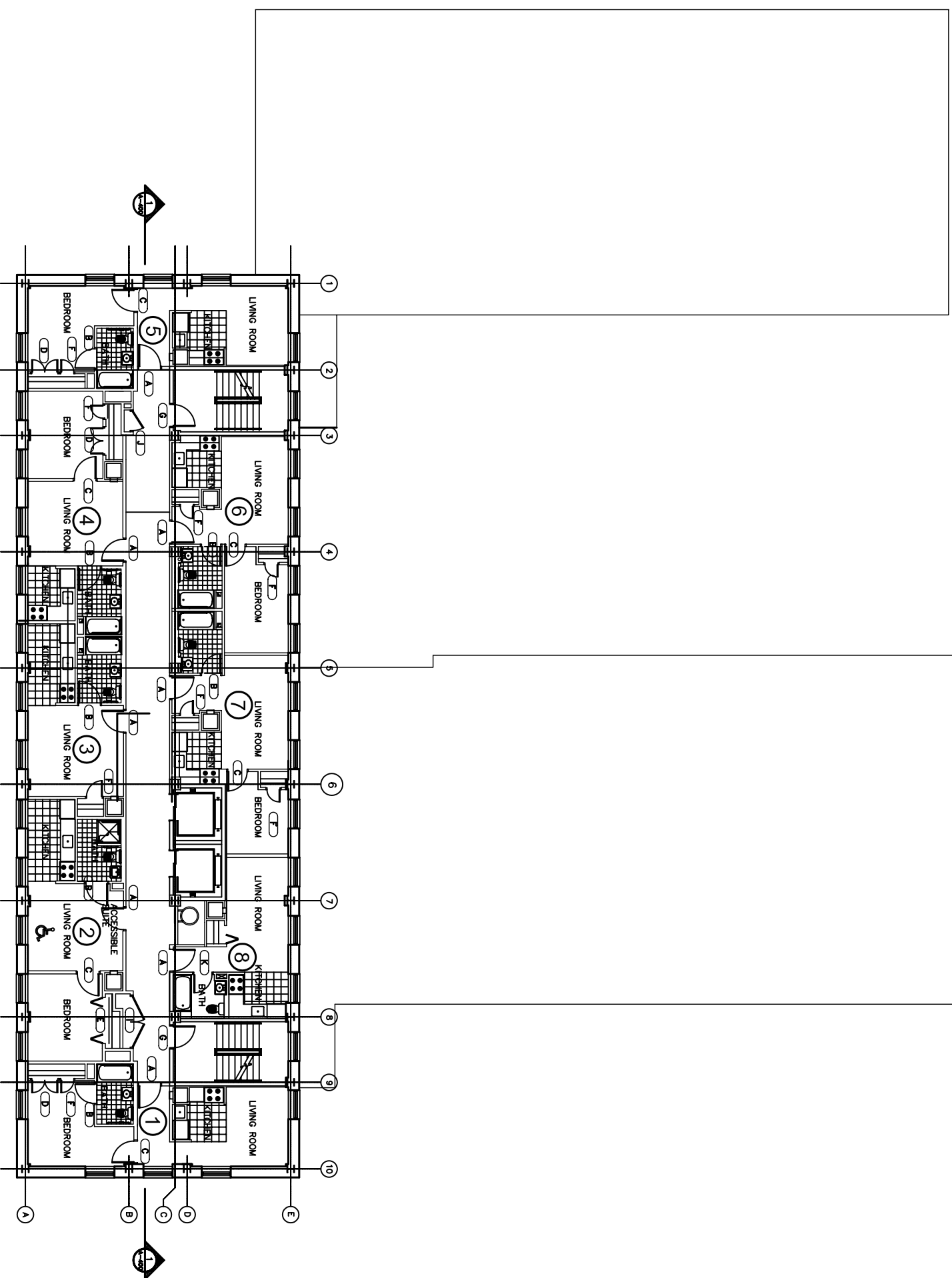


THIRD THRU NINTH FINISH SCHEDULE

ROOM NAME	FLOOR	BASE	WALLS	CEILING	NOTES
LIVING	CAR-PAD	VINYL	PTD-GYP	PTD-GYP	1
BEDROOM	CAR-PAD	VINYL	PTD-GYP	PTD-GYP	1
BATH RM.	SHT-VIN	VINYL	PTD-GYP	PTD-GYP	3
KITCHEN	VIN-TILE	VINYL	PTD-GYP	LAY-IN	
CLOSETS	CAR-PAD	VINYL	PTD-GYP	PTD-GYP	
CORRIDOR	CARPET	VINYL	GYP.BD.	LAY-IN	5

NOTES: 1. REPAIR AND PAINT EXISTING, EXTERIOR PLASTER WALL

- NOT USED
 - PROVIDE FIBERGLASS TUB SURROUNDS
 - REPAIR AND PAINT EXIST. EXTERIOR PLASTER WALL AT SHITS
 - 2 X 4 ACOUSTIC LAY IN CEILING TILE SCORED TO CREATE A 2 X 2 LOOK (SECOND LOOK BY ANASTROM)
- ALL PAINTS, PRIMERS AND SEALANTS SHALL HAVE LOW VOC CONTENT. ALL CARPETS SHALL BE GREEN LABEL CARPET.



2 THIRD THRU NINTH FLOOR PLAN
 SCALE: 1/8" = 1'-0"

**Emeritus House
 Historic Restoration**
 4450 Cedar Avenue
 Cleveland Ohio, 44103

Robert P. Madison International, Inc
 Architects · Engineers · Planners
 2930 Euclid Avenue
 Cleveland, Ohio 44115
 Tel. 216-861-6195 Fax. 216-621-8738

Mechanical Engineer
POINT ONE DESIGN, LTD
 Consulting Engineers
 Tel: (440) 230-1880 Fax: (440) 230-1831

Developers:
 PVA ENTERPRISES LLC
 Phillip Wheatley
 Association
 4499 Cedar Avenue
 Cleveland, Ohio 44103
 Tel. 216-791-4443
 Fax. 216-791-6685

Panicos Foundation
 1325 Jewel Road
 Cleveland, Ohio 44106
 Tel. 216-791-6676
 Fax. 216-791-9485

Ohio Capital Corporation
 for Housing
 68 East Broad Street,
 Columbus, OH 43215
 Tel. 614-221-9448
 Fax. 614-221-9452

Contractors:
 Marous Brothers
 Construction
 1702 Joseph Lord Parkway
 Willoughby, OH 44094
 Cleveland, Ohio 44115
 Tel. 440-951-3804
 Fax. 440-951-3701

Building Managers
 ABC Management
 P.O. Box 22805
 22875 Commerce Park
 Cleveland, Ohio 44122
 Tel. 216-991-0881
 Fax. 216-991-1182

REVISIONS

NO.	DATE	REMARK

DATE: 6-9-06
 SCALE: 1/8" = 1'-0"
 DRAWN: RKL
 CHECKED: RKL
 PROJECT NO.: 0329
 © 2006 PVA ENTERPRISES LLC